

PETERSBURG, WEST VIRGINIA

AL-6500 (FAA)

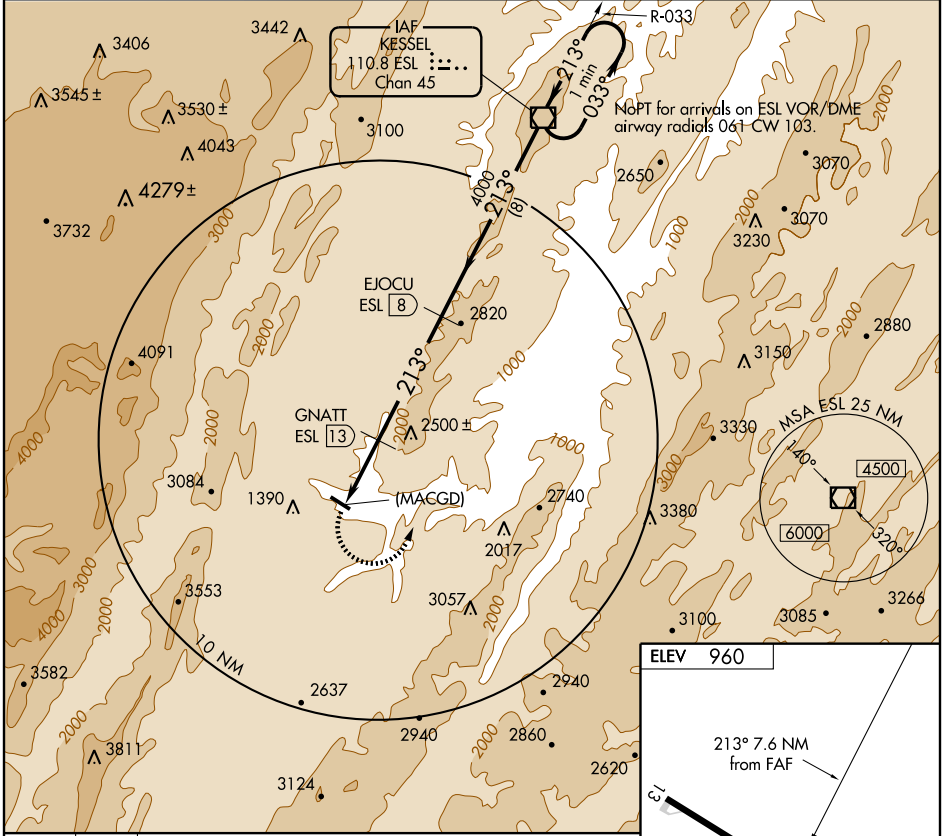
VOR/DME ESL 110.8 Chan 45	APP CRS 213°	Rwy Idg TDZE Apt Elev 960	N/A N/A 960
---	------------------------	---	-------------------

VOR/DME or GPS-A

PETERSBURG / GRANT COUNTY (W99)

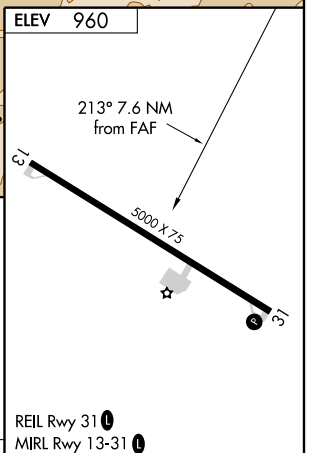
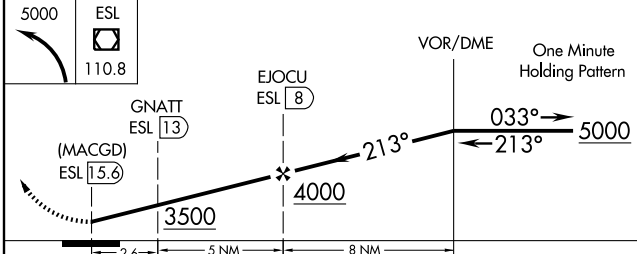
<p>▼</p> <p>▲ NA</p>	<p>MISSED APPROACH: Climbing left turn to 5000 direct ESL VOR/DME and hold.</p>	
----------------------	---	--

<p>AWOS-3</p> <p>124.475</p>	<p>WASHINGTON CENTER</p> <p>133.65 285.6</p>	<p>UNICOM</p> <p>122.8 (CTAF)</p>
-------------------------------------	---	--



NE-4, 22 OCT 2009 to 19 NOV 2009

NE-4, 22 OCT 2009 to 19 NOV 2009



CATEGORY	A	B	C	D						
CIRCLING	3100-1¼ 2140 (2200-1¼)	3100-1½ 2140 (2200-1½)	3100-3 2140 (2200-3)	NA	Knots	60	90	120	150	180
					Min:Sec					

PETERSBURG, WEST VIRGINIA
Amdt 2 07018

39°00'N - 79°09'W

PETERSBURG / GRANT COUNTY (W99)
VOR/DME or GPS-A