

PETERSBURG, WEST VIRGINIA

AL-6500 (FAA)

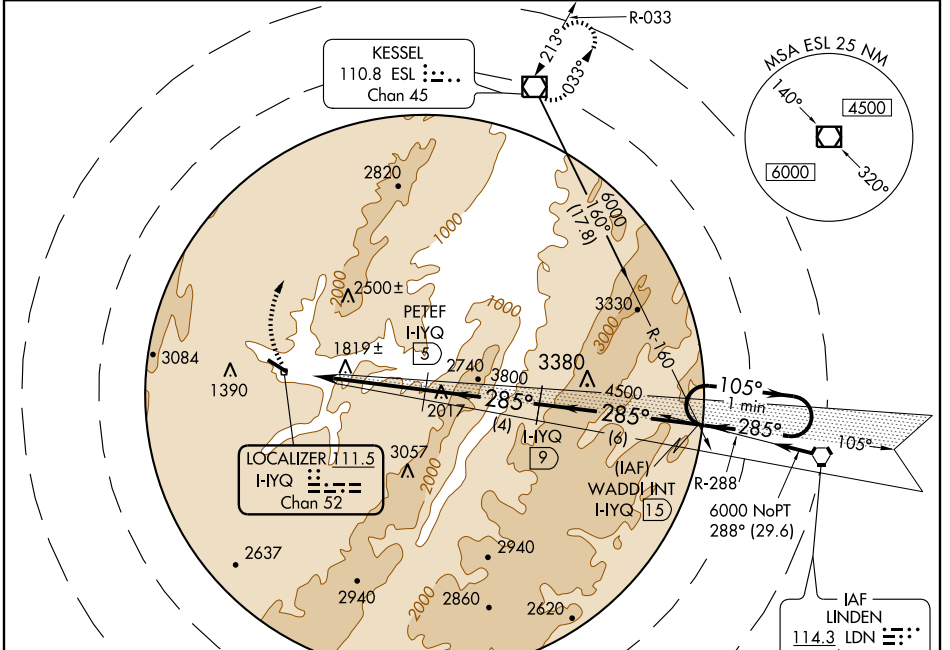
LDA/DME-B

PETERSBURG / GRANT COUNTY (W99)

LOC I-YQ 111.5 Chan 52	APP CRS 285°	Rwy Idg TDZE Apt Elev 960	N/A N/A 960
-------------------------------------	------------------------	---	--------------------------

▼ MISSED APPROACH: Climbing right turn to 5000 direct ESL VOR/DME and hold.
▲ NA

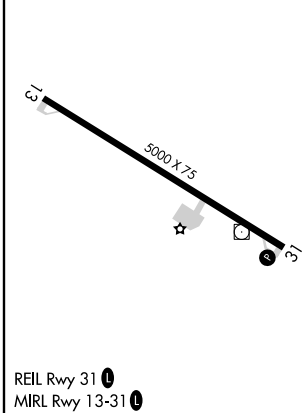
AWOS-3 124.475	WASHINGTON CENTER 133.65 285.6	UNICOM 122.8 (CTAF)
--------------------------	--	-------------------------------



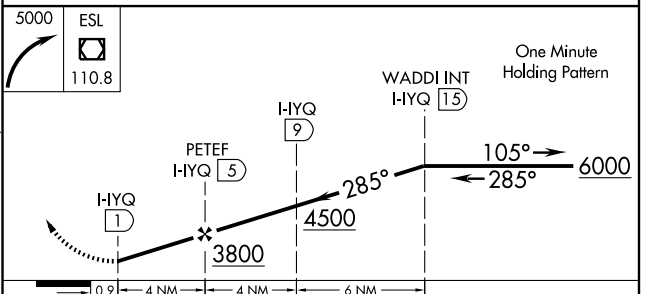
NE-4, 22 OCT 2009 to 19 NOV 2009

NE-4, 22 OCT 2009 to 19 NOV 2009

ELEV 960



FEEDER FACILITIES
ENROUTE FACILITIES



CATEGORY	A	B	C	D
CIRCLING	2200-1¼ 1240 (1300-114)	2200-1½ 1240 (1300-1½)	2200-3 1240 (1300-3)	NA

PETERSBURG, WEST VIRGINIA
Amdt 3 07018

PETERSBURG / GRANT COUNTY (W99)
LDA/DME-B

39°00'N - 79°09'W