

GIDDINGS, TEXAS

AL-6499 (FAA)

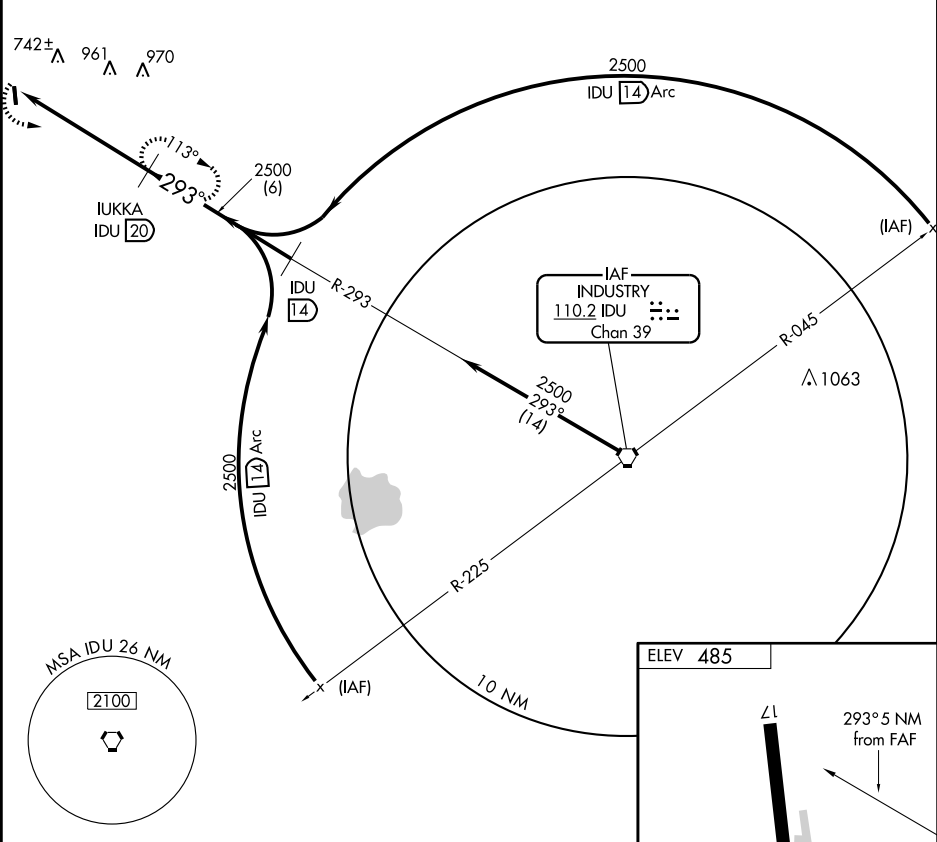
VORTAC IDU 110.2 Chan 39	APP CRS 293°	Rwy Idg TDZE Apt Elev N/A N/A 485
--	------------------------	---

VOR/DME-A

GIDDINGS-LEE COUNTY (GYB)

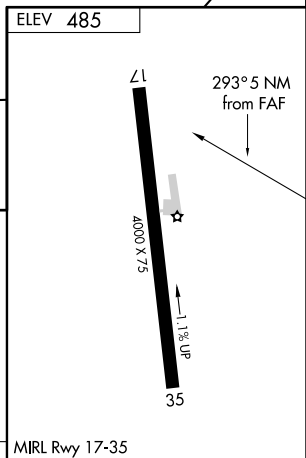
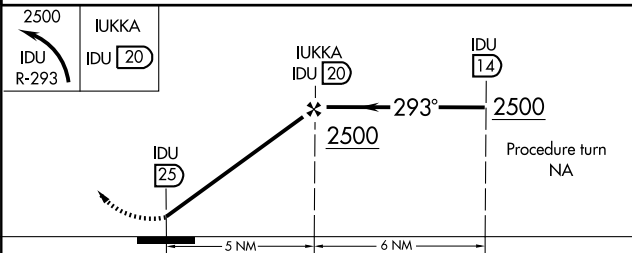
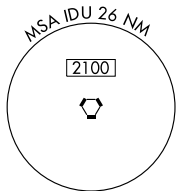
▲ NA Use Austin-Bergstrom Intl altimeter setting.	MISSED APPROACH: Climbing left turn to 2500 via IDU R-293 to IUUKA 20 DME and hold.
--	---

AWOS-3 119.225	HOUSTON CENTER 132.15 279.6	UNICOM 123.05 (CTAF)
--------------------------	---------------------------------------	--------------------------------



SC-5, 22 OCT 2009 to 19 NOV 2009

SC-5, 22 OCT 2009 to 19 NOV 2009



CATEGORY	A	B	C	D	Knots	60	90	120	150	180
	CIRCLING	1300-1 815 (900-1)	1300-1¼ 815 (900-1¼)	1300-2½ 815 (900-2½)		NA	Min:Sec			

GIDDINGS, TEXAS
Amdt 3 04162

30° 10' N-96° 59' W

VOR/DME-A

GIDDINGS-LEE COUNTY (GYB)