

GIDDINGS, TEXAS

AL-6499 (FAA)

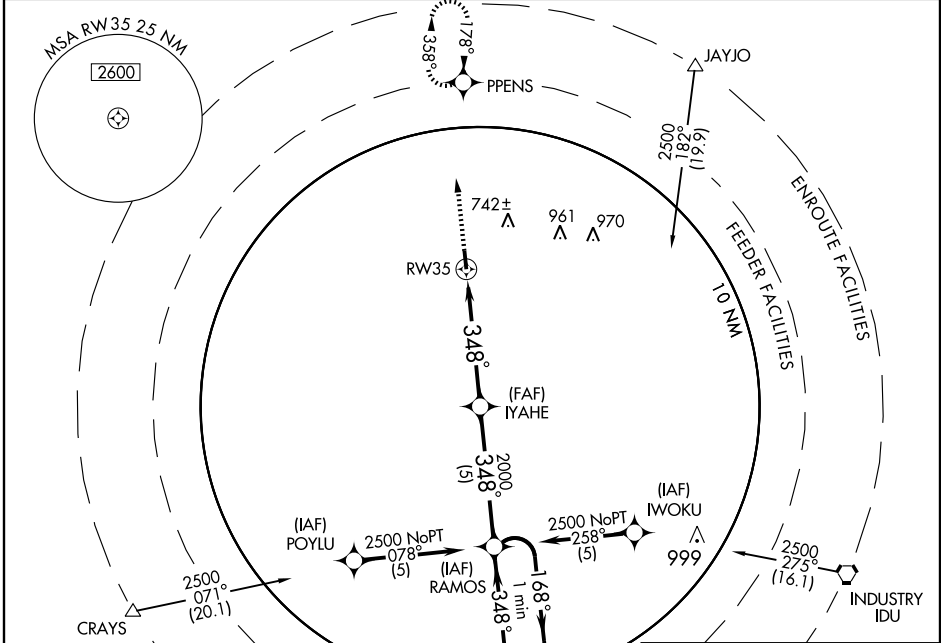
GPS RWY 35

GIDDINGS-LEE COUNTY (GYB)

APP CRS	Rwy Idg	4000
348°	TDZE	485
	Apt Elev	485

▲ NA Use Austin-Bergstrom Intl altimeter setting. MISSED APPROACH: Climb to 2500 direct PPENS WP and hold.

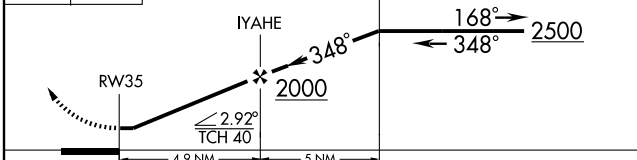
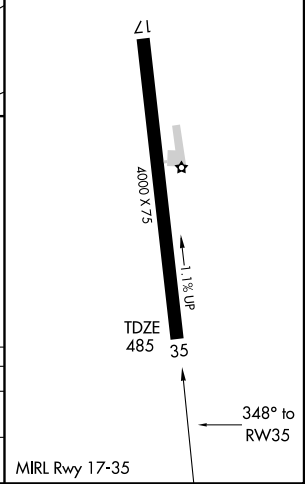
AWOS-3 119.225	HOUSTON CENTER 132.15 279.6	UNICOM 123.05 (CTAF)
--------------------------	---------------------------------------	--------------------------------



SC-5, 22 OCT 2009 to 19 NOV 2009

SC-5, 22 OCT 2009 to 19 NOV 2009

ELEV 485



CATEGORY	A	B	C	D
S-35	1000-1 527 (600-1)		1000-1½ 527 (600-1½)	NA
CIRCLING	1080-1 595 (600-1)		1080-1½ 595 (600-1½)	NA

MIRL Rwy 17-35

GIDDINGS, TEXAS
Orig 04162

30° 10' N-96° 59' W

GIDDINGS-LEE COUNTY (GYB)

GPS RWY 35