

GIDDINGS, TEXAS

AL-6499 (FAA)

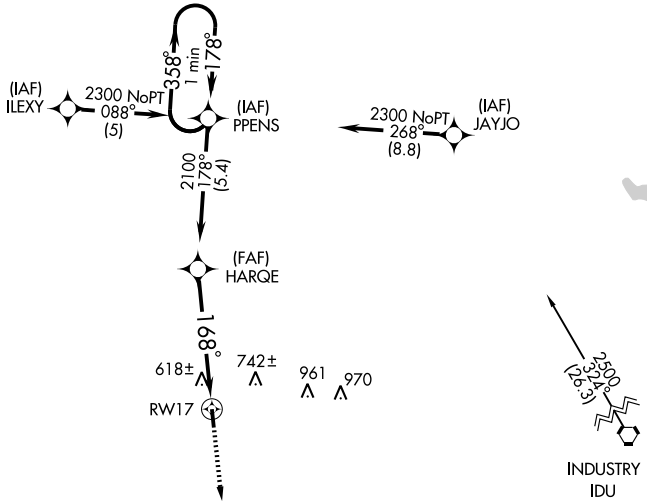
GPS RWY 17

GIDDINGS-LEE COUNTY (GYB)

APP CRS 168°	Rwy Idg 4000
	TDZE 485
	Apt Elev 485

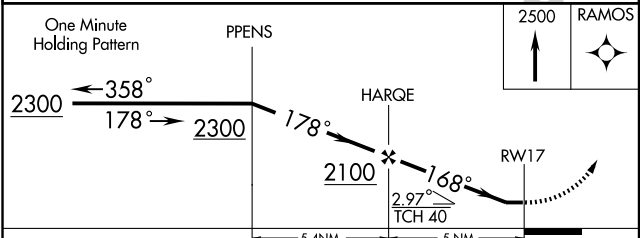
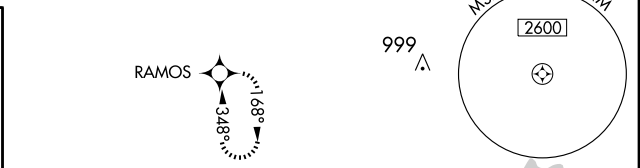
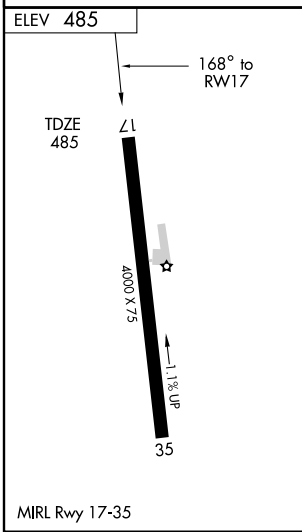
NA Use Austin-Bergstrom Intl altimeter setting. MISSED APPROACH: Climb to 2500 direct RAMOS WP and hold.

AWOS-3 119.225	HOUSTON CENTER 132.15 279.6	UNICOM 123.05 (CTAF)
--------------------------	---------------------------------------	--------------------------------



SC-5, 22 OCT 2009 to 19 NOV 2009

SC-5, 22 OCT 2009 to 19 NOV 2009



CATEGORY	A	B	C	D
S-17	1020-1 535 (600-1)		1020-1½ 535 (600-1½)	NA
CIRCLING	1080-1 595 (600-1)		1080-1½ 595 (600-1½)	NA

GIDDINGS, TEXAS
Orig 04162

30° 10' N-96° 59' W

GPS RWY 17