

# LOC RWY 4

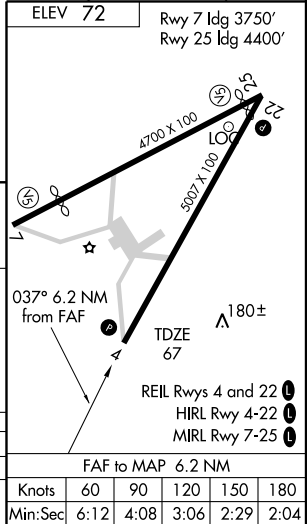
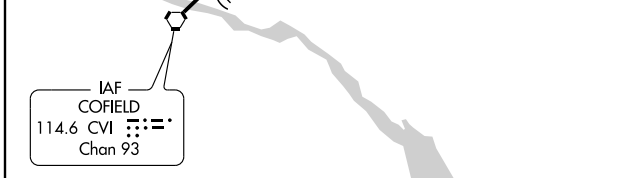
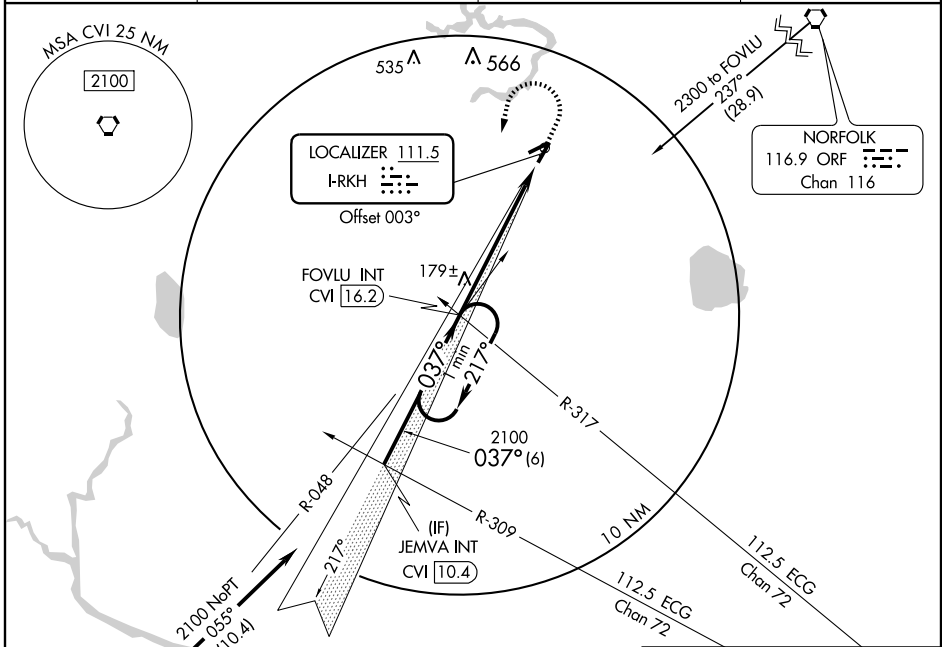
SUFFOLK EXECUTIVE (SFQ)

LOC I-RKH <b>111.5</b>	APP CRS <b>037°</b>	Rwy ldg <b>5007</b> TDZE <b>67</b> Apr Elev <b>72</b>
---------------------------	------------------------	---

**NA** If local altimeter setting not received, use Norfolk Intl altimeter setting and increase all MDAs 60 feet.

**MISSED APPROACH:** Climb to 500, then climbing left turn to 2100 via CVI R-048 to FOVLU and hold.

AWOS-3 <b>119.375</b>	NORFOLK APP CON <b>127.9 269.42</b>	UNICOM <b>122.7 (CTAF)</b>	GCO <b>135.075</b>
--------------------------	--	-------------------------------	-----------------------



CATEGORY	A	B	C	D
S-4		440-1 373 (400-1)		NA
CIRCLING	480-1 408 (500-1)	540-1 468 (500-1)	540-1½ 468 (500-1½)	NA

FAF to MAP 6.2 NM					
Knots	60	90	120	150	180
Min:Sec	6:12	4:08	3:06	2:29	2:04

NE-3, 22 OCT 2009 to 19 NOV 2009

NE-3, 22 OCT 2009 to 19 NOV 2009