

WEATHERFORD, TEXAS

AL-6497 (FAA)

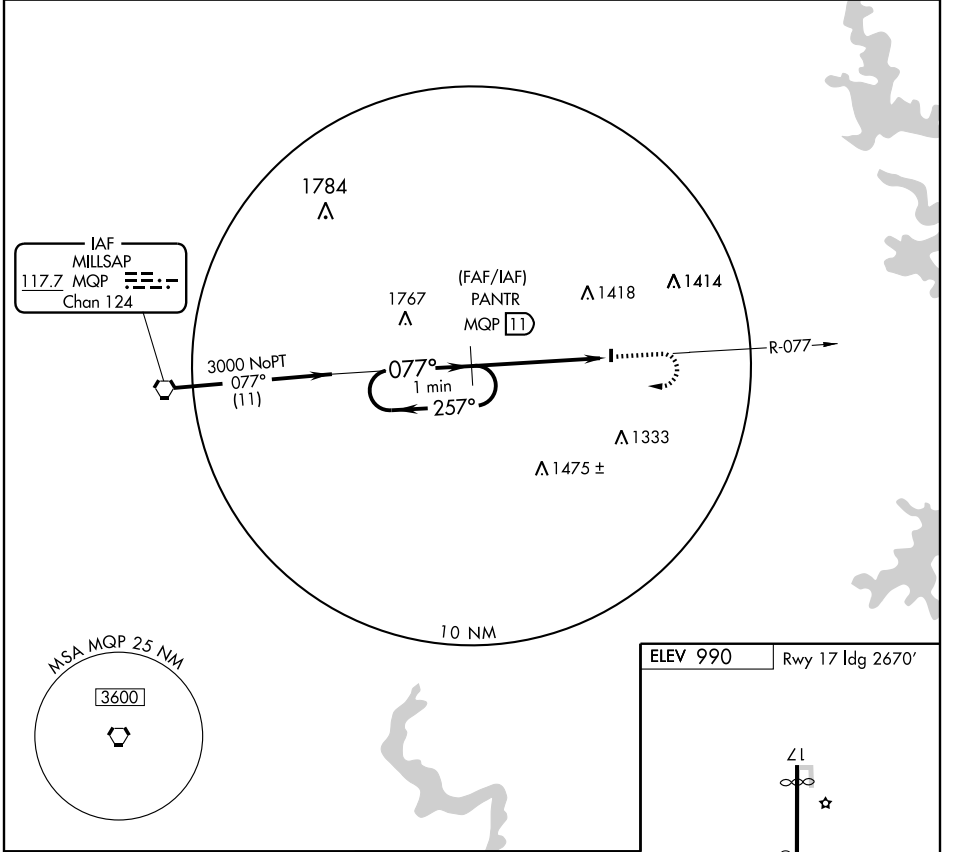
VOR/DME-A

WEATHERFORD/PARKER COUNTY (WEA)

VORTAC MQP 117.7 Chan 124	APP CRS 077°	Rwy ldg TDZE Apt Elev N/A N/A 990
---	------------------------	---

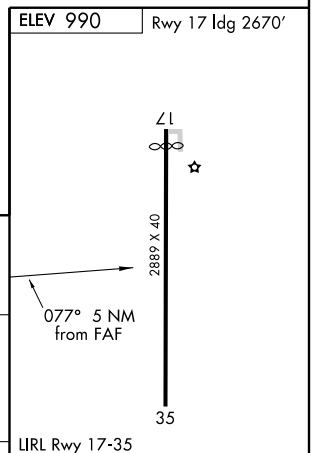
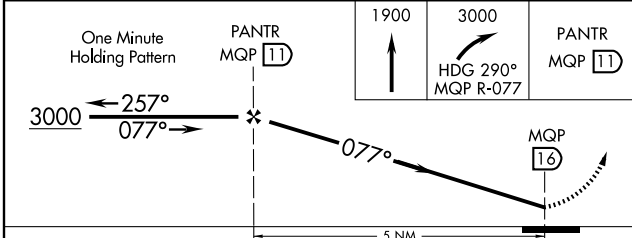
▲ NA Use Fort Worth Meacham altimeter setting.	MISSED APPROACH: Climb to 1900 then climbing right turn to 3000 via heading 290° and MQP R-077 to PANTR and hold.
---	---

REGIONAL APP CON 135.975 379.9	UNICOM 122.7 (CTAF)
--	-------------------------------



SC-2, 22 OCT 2009 to 19 NOV 2009

SC-2, 22 OCT 2009 to 19 NOV 2009



CATEGORY	A	B	C	D	Knots Min:Sec	60	90	120	150	180
CIRCLING	1680-1	690 (700-1)	1680-2 690 (700-2)	NA						

WEATHERFORD, TEXAS
Orig-A 02332

32°45'N-97°41'W

WEATHERFORD/PARKER COUNTY (WEA)

VOR/DME-A