

BLACKWELL, OKLAHOMA

AL-6496 (FAA)

VOR-A

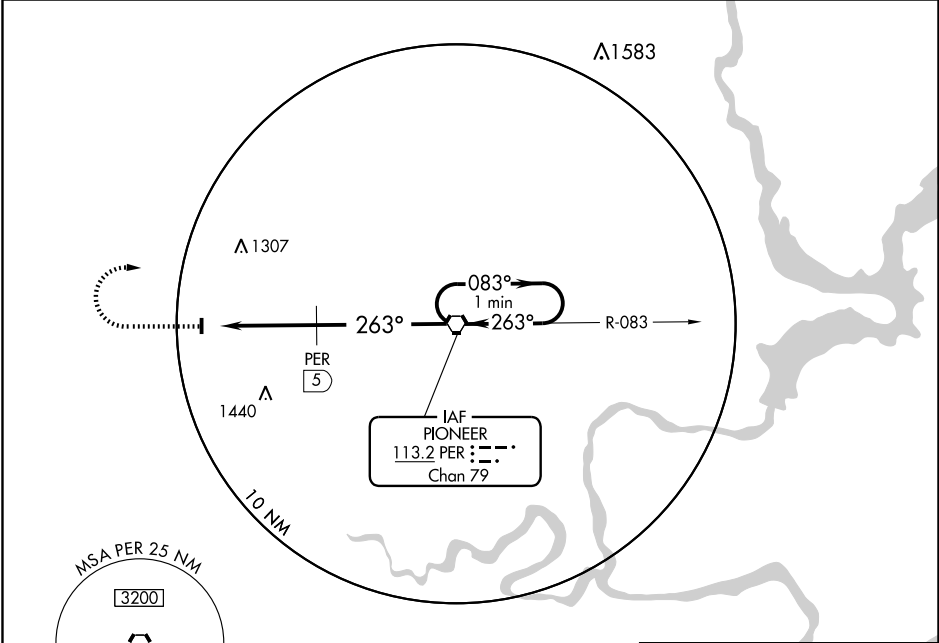
BLACKWELL-TONKAWA MUNI (BKN)

VORTAC PER 113.2 Chan 79	APP CRS 263°	Rwy Idg TDZE Apt Elev 1029	N/A N/A 1029
--	------------------------	--	---------------------------

▲ NA Use Ponca City altimeter setting; when not received, use Wichita Mid-Continent altimeter setting and increase all MDAs 140 feet.

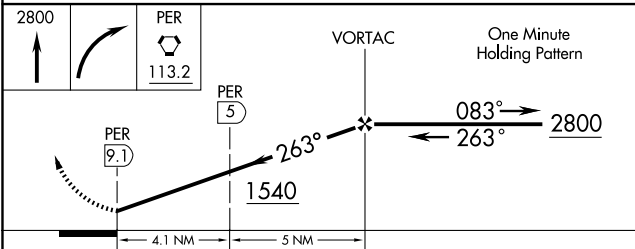
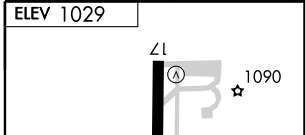
MISSED APPROACH: Climb to 2800 then right turn direct PER VORTAC and hold.

AWOS-3 120.575	KANSAS CITY CENTER 127.8 319.1	UNICOM 122.8 (CTAF)
--------------------------	--	-------------------------------



SC-1, 22 OCT 2009 to 19 NOV 2009

SC-1, 22 OCT 2009 to 19 NOV 2009



CATEGORY	A	B	C	D
CIRCLING	1540-1 411 (500-1)	511 (600-1)	1540-1½ 511 (600-1½)	NA
DME MINIMUMS				
CIRCLING	1440-1 411 (500-1)	1480-1 451 (500-1)	1480-1½ 451 (500-1½)	NA

ELEV 1029				
MIRL Rwy 17-35				
FAF to MAP 9.1 NM				
Knots	60	90	120	150
Min:Sec	9:06	6:04	4:33	3:38
			3:02	

BLACKWELL, OKLAHOMA
Amdt 3A 09071

36° 45'N-97° 21'W

BLACKWELL-TONKAWA MUNI (BKN)

VOR-A