

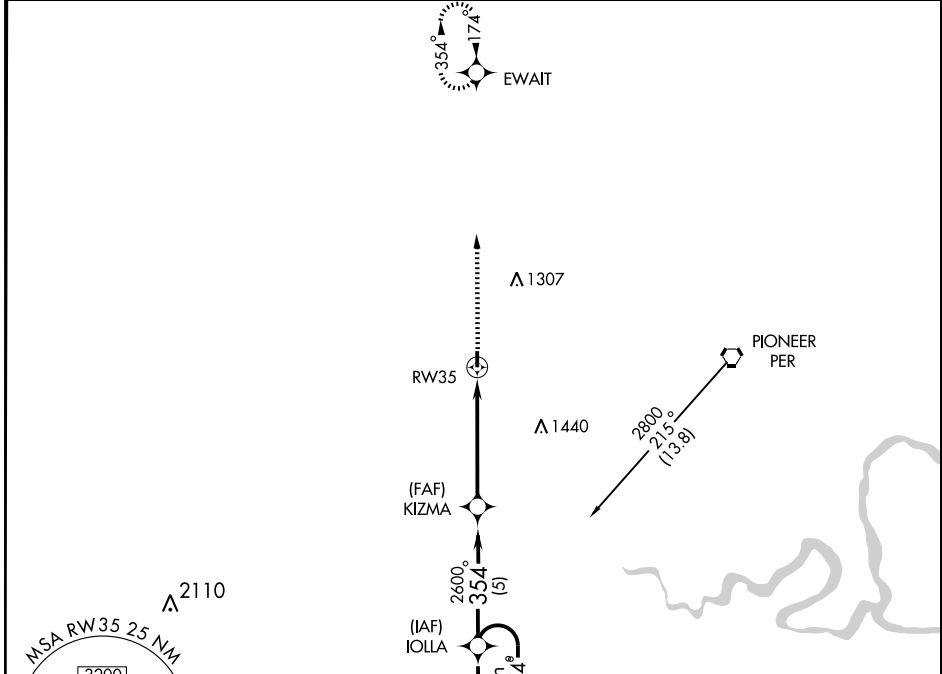
GPS RWY 35

BLACKWELL-TONKAWA MUNI (BKN)

APP CRS 354°	Rwy Idg 3501
	TDZE 1026
	Apt Elev 1029

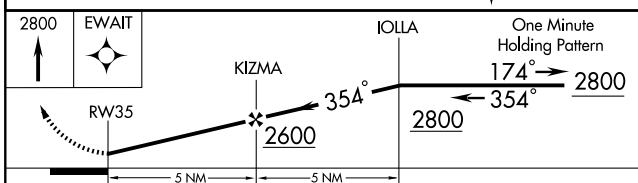
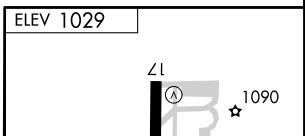
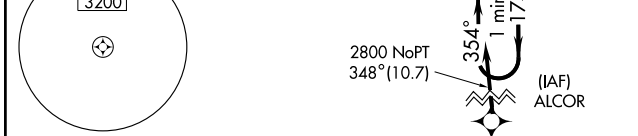
▲ NA Use Ponca City altimeter setting; when not received, use Wichita Mid-Continent altimeter setting. **MISSED APPROACH:** Climb to 2800 direct EWAIT and hold.

AWOS-3 120.575	KANSAS CITY CENTER 127.8 319.1	UNICOM 122.8 (CTAF)
--------------------------	--	-------------------------------



SC-1, 22 OCT 2009 to 19 NOV 2009

SC-1, 22 OCT 2009 to 19 NOV 2009



CATEGORY	A	B	C	D
S-35	1420-1 396 (400-1)			NA
CIRCLING	1480-1	451 (500-1)	1480-1½ 451 (500-1½)	NA
WICHITA MID-CONTINENT ALTIMETER SETTING MINIMUMS				
S-35	1560-1	536 (600-1)	1560-1½ 536 (600-1½)	NA
CIRCLING	1620-1	591 (600-1)	1620-1½ 591 (600-1½)	NA

