

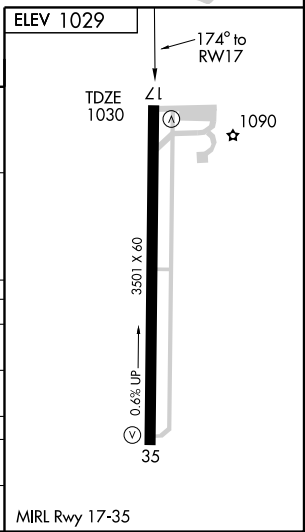
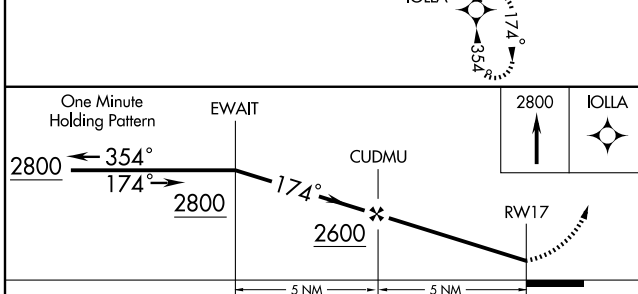
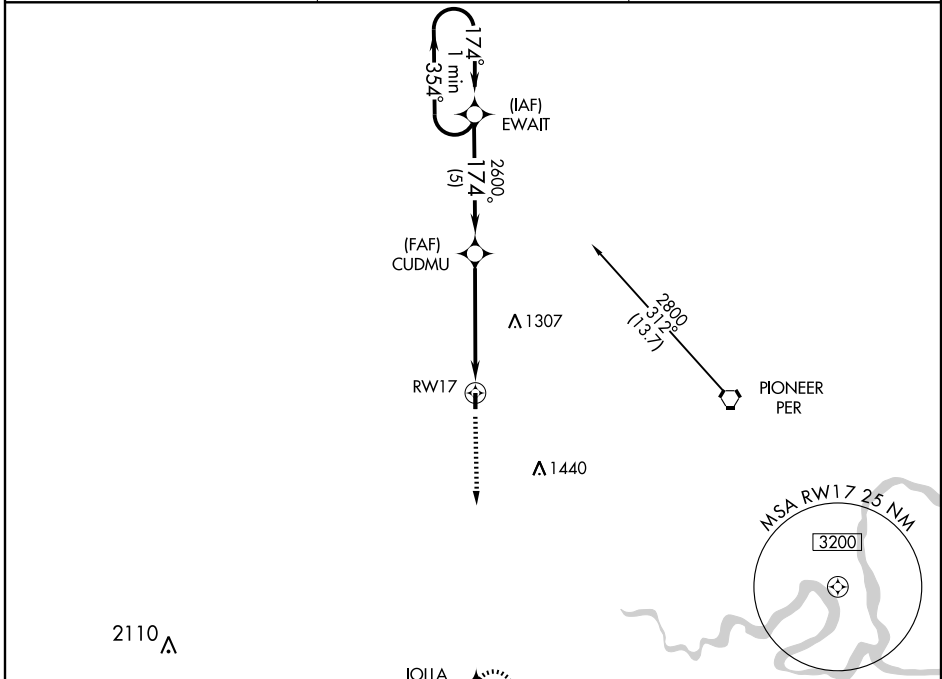
# GPS RWY 17

BLACKWELL-TONKAWA MUNI (BKN)

APP CRS <b>174°</b>	Rwy Idg <b>3501</b>
	TDZE <b>1030</b>
	Apt Elev <b>1029</b>

**NA** Use Ponca City altimeter setting; when not received, use Wichita Mid-Continent altimeter setting. MISSED APPROACH: Climb to 2800 direct IOLLA and hold.

AWOS-3 <b>120.575</b>	KANSAS CITY CENTER <b>127.8 319.1</b>	UNICOM <b>122.8 (CTAF)</b>
--------------------------	--	-------------------------------



CATEGORY	A	B	C	D
S-17	1560-1	531 (600-1)	1560-1½ 531 (600-1½)	NA
CIRCLING	1560-1	531 (600-1)	1560-1½ 531 (600-1½)	NA
WICHITA MID-CONTINENT ALTIMETER SETTING MINIMUMS				
S-17	1700-1	671 (700-1)	1700-2 671 (700-2)	NA
CIRCLING	1700-1	671 (700-1)	1700-2 671 (700-2)	NA

MIRL Rwy 17-35

SC-1, 22 OCT 2009 to 19 NOV 2009

SC-1, 22 OCT 2009 to 19 NOV 2009