

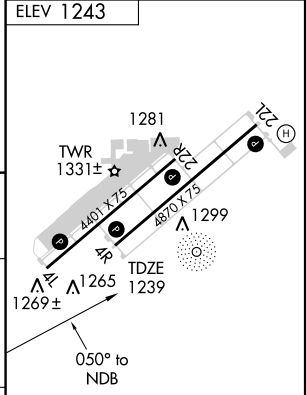
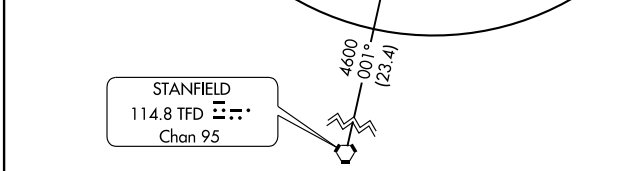
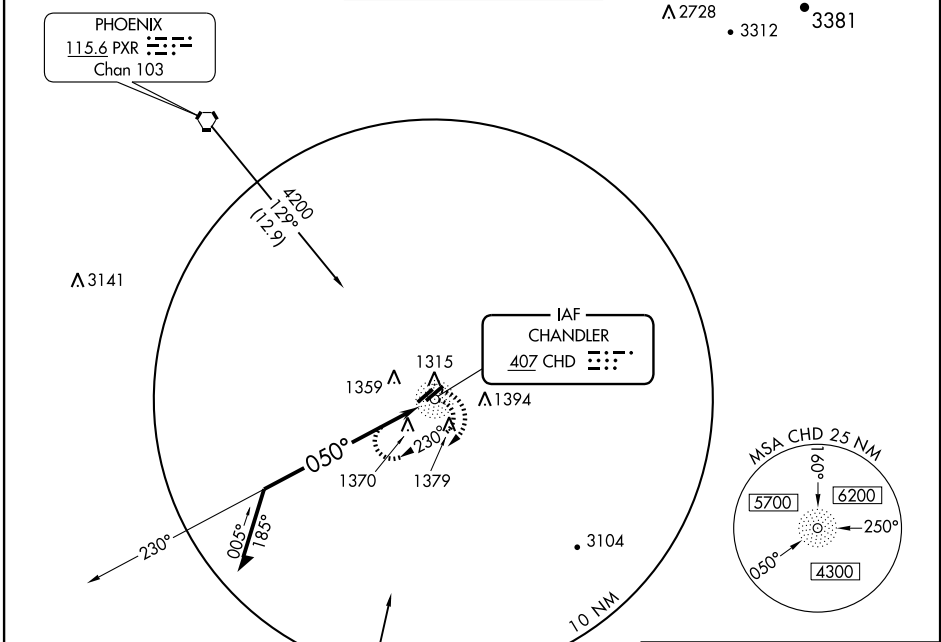
# NDB RWY 4R

CHANDLER MUNI (CHD)

NDB CHD <b>407</b>	APP CRS <b>050°</b>	Rwy Idg <b>4870</b>
		TDZE <b>1239</b>
		Apt Elev <b>1243</b>

**NA** When VGSI inoperative, circling Rwy 4L NA at night. MISSED APPROACH: Climbing right turn to 3000 in CHD holding pattern.

ATIS <b>128.325</b>	PHOENIX APP CON <b>123.7 363.0</b>	CHANDLER TOWER* <b>126.1 (CTAF) 133.1</b> (North and West) (South and East)	GND CON <b>124.4</b>	UNICOM <b>122.95</b>
------------------------	---------------------------------------	---	-------------------------	-------------------------



3000 CHD 407

\*Maintain 3400 or above until established outbound for procedure turn.

CATEGORY	A	B	C	D
S-4R	1780-1	541 (600-1)	1780-1½ 541 (600-1½)	NA
CIRCLING	1780-1	538 (600-1)	1780-1½ 538 (600-1½)	NA

REIL Rwy 4R and 22L  
MIRL Rwy 4L-22R and 4R-22L

SW-4, 22 OCT 2009 to 19 NOV 2009

SW-4, 22 OCT 2009 to 19 NOV 2009