

OSKALOOSA, IOWA

AL-6493 (FAA)

VOR/DME OTM 111.6 Chan 53	APP CRS 321°	Rwy Idg TDZE Apt Elev	4003 837 840
---	------------------------	-----------------------------	---

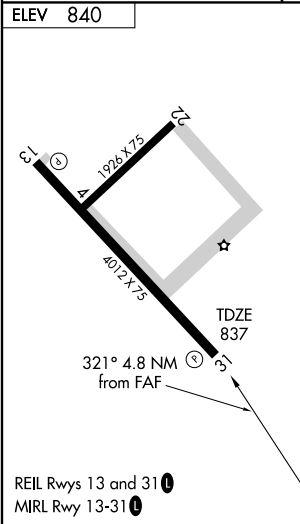
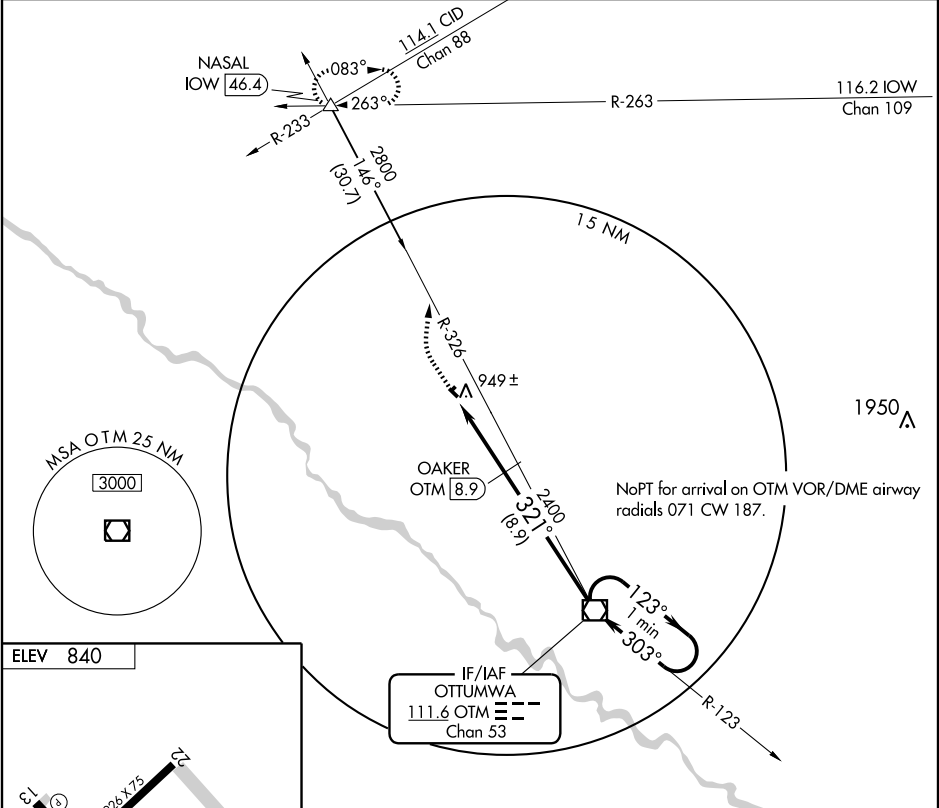
VOR/DME RWY 31

OSKALOOSA MUNI (00A)

NA If local altimeter setting not received, use Ottumwa altimeter setting and increase all MDAs 20 feet.

MISSED APPROACH: Climb to 1300 then climbing right turn to 2800 via heading 360° and OTM R-326 to NASAL Int/IOW 46.4 DME and hold.

AWOS-3 118.625	CHICAGO CENTER 118.15 354.1	UNICOM 122.8 (CTAF) 0
--------------------------	---------------------------------------	--



1300	2800	OTM R-326 111.6	NASAL Δ	VGSI and descent angles not coincident.	VOR/DME	One Minute Holding Pattern
↑	↻ 360°					
		OTM 12.6	OAKER OTM 8.9		123° →	← 303° 2800
		OTM 13.7		≤ 3.00° TCH 40	321°	← 2400
		1.1 NM	3.7 NM	8.9 NM		VDP NA with Ottumwa altimeter setting.
CATEGORY	A	B	C	D		
S-31	1200-1 363 (400-1)			NA		
CIRCLING	1260-1 420 (500-1)	1300-1 460 (500-1)	1300-1½ 460 (500-1½)	NA		

OSKALOOSA, IOWA
Amdt 3 09295

41°14'N-92°30'W

OSKALOOSA MUNI (00A) VOR/DME RWY 31

NC-3, 22 OCT 2009 to 19 NOV 2009

NC-3, 22 OCT 2009 to 19 NOV 2009