

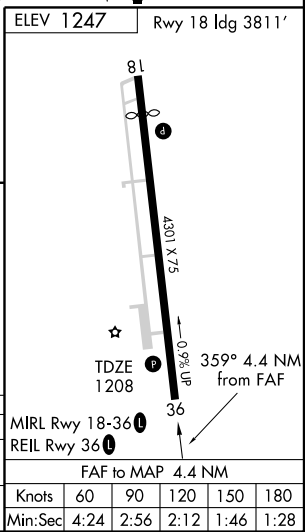
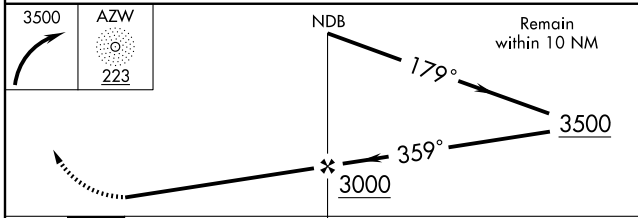
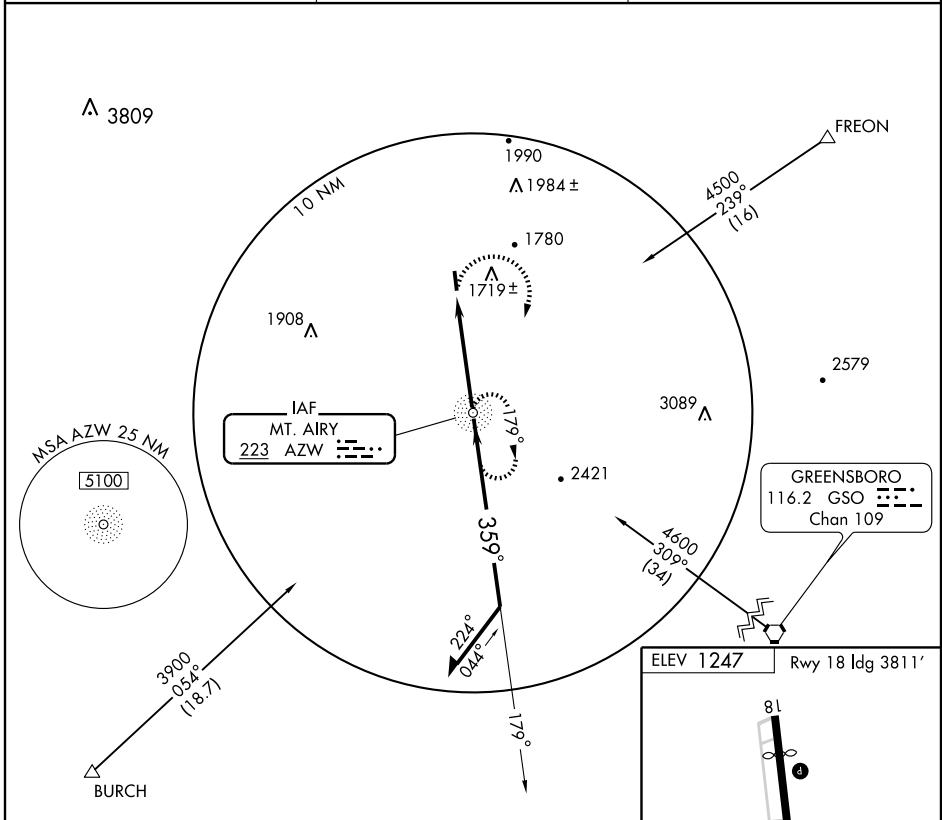
NDB RWY 36

MOUNT AIRY/ SURRY COUNTY (MWK)

NDB AZW 223	APP CRS 359°	Rwy Idg TDZE Apt Elev	4301 1208 1247
-----------------------	------------------------	-----------------------------	---

NA Circling not authorized East of Rwy 18-36. MISSED APPROACH: Climbing right turn to 3500 direct AZW NDB and hold.

AWOS-3 121.125	GREENSBORO APP CON 124.35 269.225	UNICOM 123.0 (CTAF)
--------------------------	---	-------------------------------



CATEGORY	A	B	C	D
S-36	2000-1 792 (800-1)	2000-1¼ 792 (800-1¼)	2000-2¼ 792 (800-2¼)	2000-2½ 792 (800-2½)
CIRCLING	2020-1 773 (800-1)	2020-1¼ 773 (800-1¼)	2020-2¼ 773 (800-2¼)	2020-2½ 773 (800-2½)

MRL Rwy 18-36	REIL Rwy 36	FAF to MAP 4.4 NM				
Knots	60	90	120	150	180	
Min:Sec	4:24	2:56	2:12	1:46	1:28	

SE-2, 22 OCT 2009 to 19 NOV 2009

SE-2, 22 OCT 2009 to 19 NOV 2009