

VERNON, TEXAS

AL-6490 (FAA)

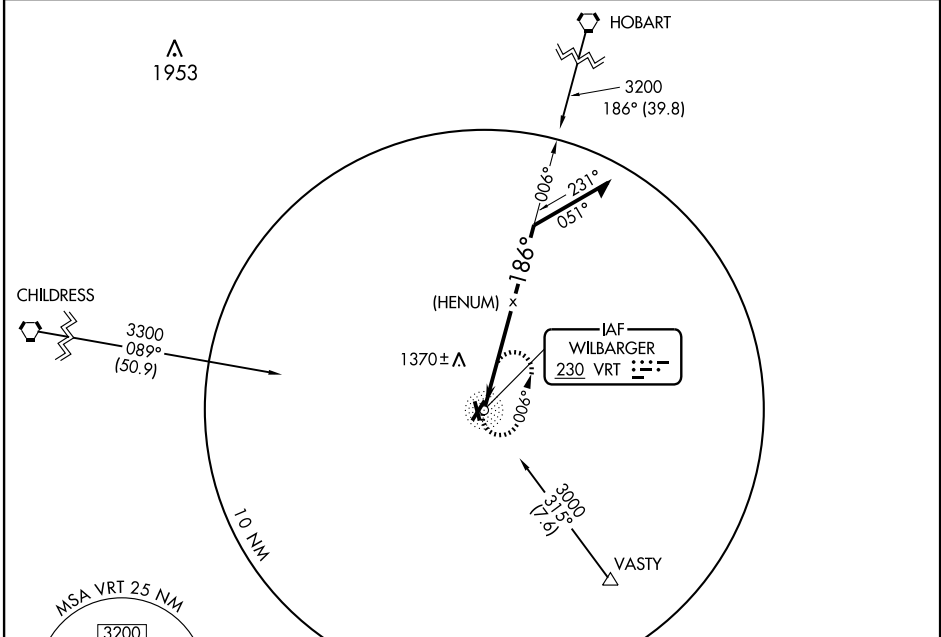
NDB or GPS RWY 20

VERNON/ WILBARGER COUNTY (F05)

NDB VRT 230	APP CRS 186°	Rwy Idg TDZE Apt Elev	5099 1257 1264
-----------------------	------------------------	-----------------------------	---

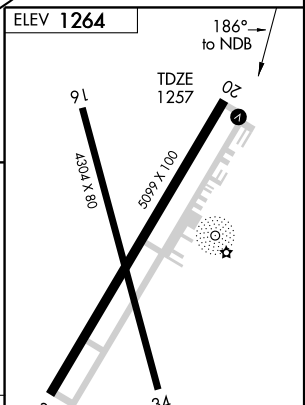
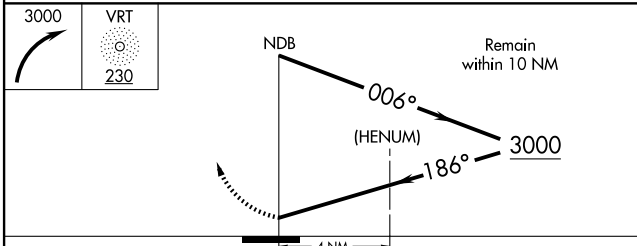
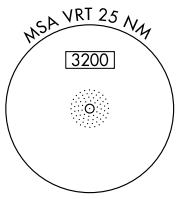
▲ NA Use Altus AFB, OK altimeter setting. MISSED APPROACH: Climbing right turn to 3000 to VRT NDB and hold.

AWOS-3 118,525	ALTUS APP CON ★ 125.1 259.3	UNICOM 122.8 (CTAF) 0
--------------------------	---------------------------------------	---------------------------------



SC-2, 22 OCT 2009 to 19 NOV 2009

SC-2, 22 OCT 2009 to 19 NOV 2009



CATEGORY	A	B	C	D
S-20	1820-1	563 (600-1)	1820-1½ 563 (600-1½)	NA
CIRCLING	1820-1	556 (600-1)	1820-1½ 556 (600-1½)	NA

ELEV 1264		186° to NDB			
91	02	3A	2		
430A X 80	5099 X 100				
MIRL Rwy 2-20 and 16-34					
Knots	60	90	120	150	180
Min:Sec					

VERNON, TEXAS
Orig 03359

34°14'N-99°17'W

NDB or GPS RWY 20