

VORTAC TNP 114.2 Chan 89	APP CRS 264°	Rwy Idg 5531 TDZE 1835 Apt Elev 1888
--	------------------------	---

VOR RWY 26

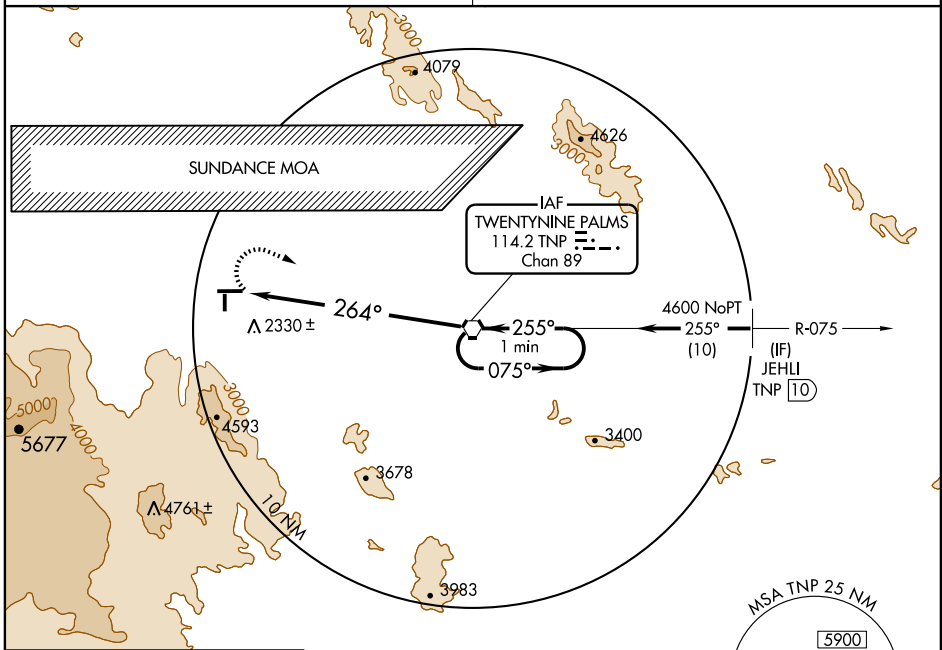
TWENTYNINE PALMS (TNP)

NA When Palm Springs Intl altimeter setting not received, procedure NA. Circling NA south of Rwy 8-26. Use Palm Springs Intl altimeter setting.

MISSED APPROACH: Climbing right turn to 5900 direct TNP VORTAC and hold, continue climb-in-hold to 5900.

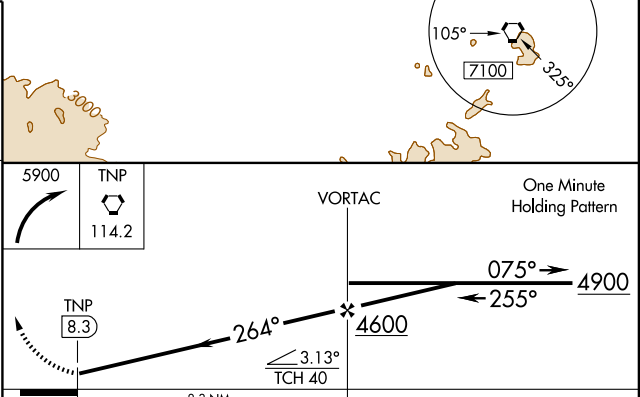
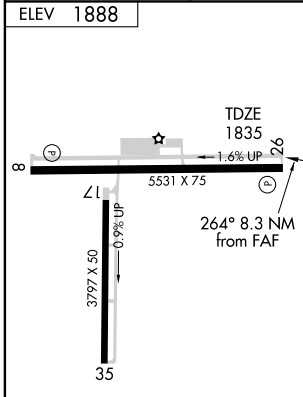
LOS ANGELES CENTER
128.15 285.6

UNICOM
122.8 (CTAF) 0



SW-3, 22 OCT 2009 to 19 NOV 2009

SW-3, 22 OCT 2009 to 19 NOV 2009



REIL Rws 8 and 26 0

MIRL Rws 8-26 and 17-35 0

FAF to MAP 8.3 NM

Knots	60	90	120	150	180
Min:Sec	8:18	5:32	4:09	3:19	2:46

CATEGORY	A	B	C	D
S-26	3580-1¼ 1745 (1700-1¼)	3580-1½ 1745 (1700-1½)		NA
CIRCLING	3580-1¼ 1692 (1700-1¼)	3580-1½ 1692 (1700-1½)		NA