

NORFOLK, VIRGINIA

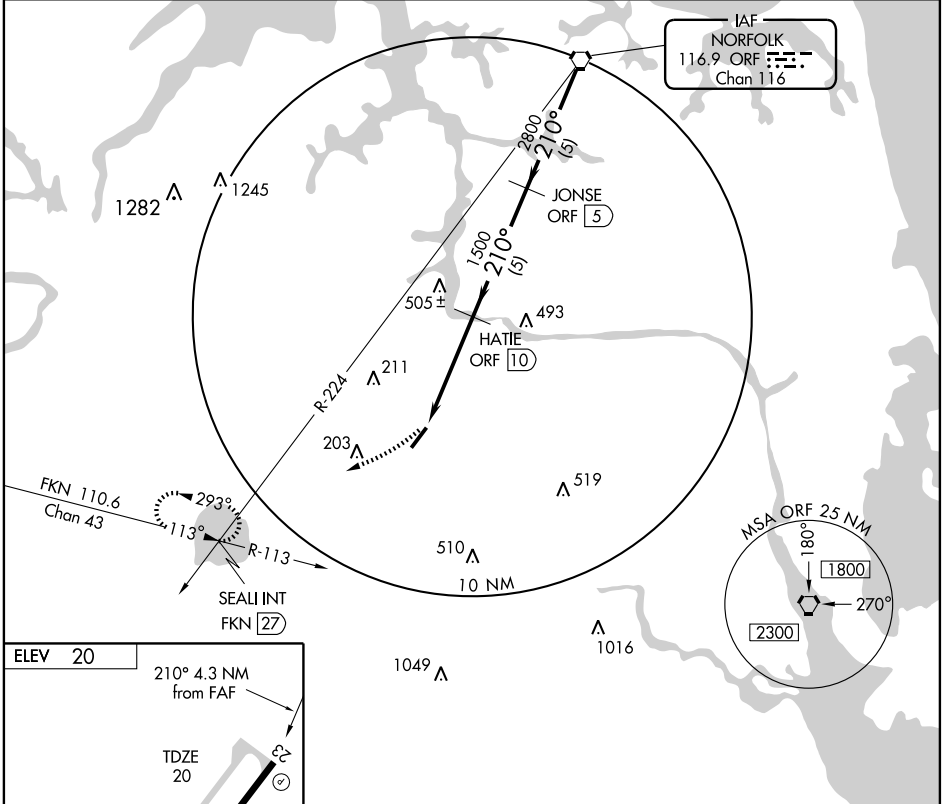
AL-6488 (FAA)

VORTAC ORF 116.9 Chan 116	APP CRS 210°	Rwy Idg 5500 TDZE 20 Apt Elev 20
---	------------------------	---

VOR/DME RWY 23

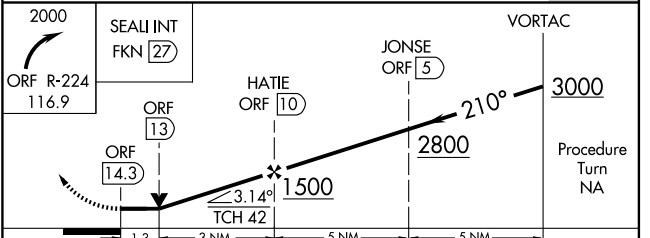
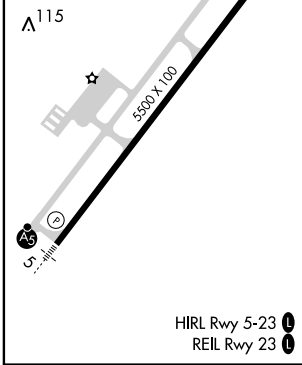
NORFOLK / CHESAPEAKE RGNL (CPK)

NA		MISSED APPROACH: Climbing right turn to 2000 via ORF R-224 to SEALI Int/FKN 27 DME and hold.	
AWOS-3 123.675	NORFOLK APP CON 118.9 353.7	GCO 135.075	UNICOM 123.05 (CTAF) 0



NE-3, 22 OCT 2009 to 19 NOV 2009

NE-3, 22 OCT 2009 to 19 NOV 2009



CATEGORY	A	B	C	D
S-23	480-1 460 (500-1)		480-1¼ 460 (500-1¼)	480-1½ 460 (500-1½)
CIRCLING	480-1 460 (500-1)		480-1½ 460 (500-1½)	580-2 560 (600-2)

NORFOLK, VIRGINIA
Orig-A 09043

36°40'N - 76°19'W

NORFOLK / CHESAPEAKE RGNL (CPK)
VOR/DME RWY 23