

OSAGE BEACH, MISSOURI

AL-6480 (FAA)

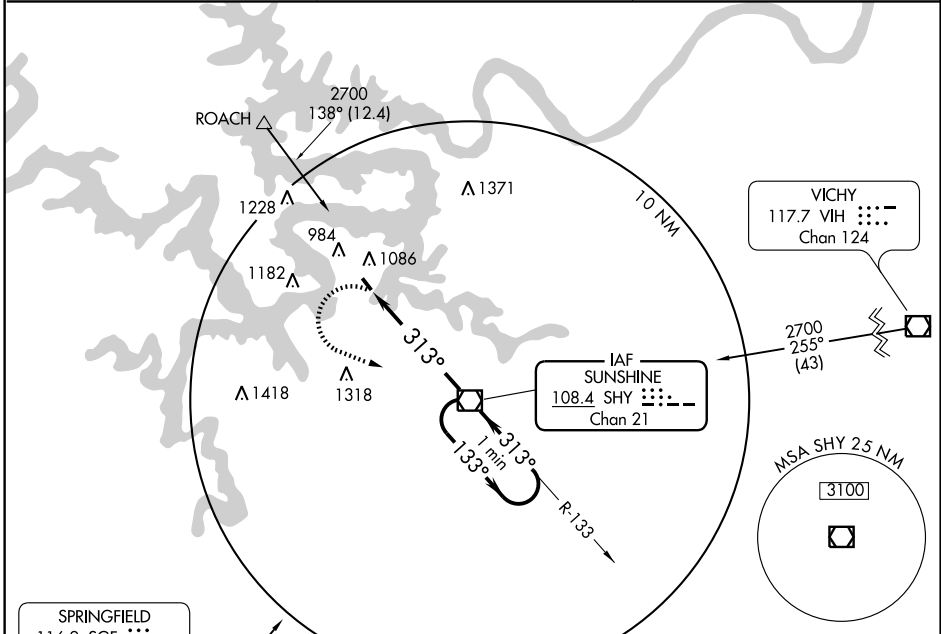
VOR RWY 32

OSAGE BEACH/ GRAND GLAIZE-OSAGE BEACH (K15)

VOR/DME SHY 108.4 Chan 21	APP CRS 313°	Rwy Idg TDZE Apt Elev	3205 875 875
--	------------------------	-----------------------------	---

▼ Use Lee C. Fine Memorial altimeter setting.
▲ NA MISSED APPROACH: Climbing left turn to 2700 direct SHY VOR/DME and hold.

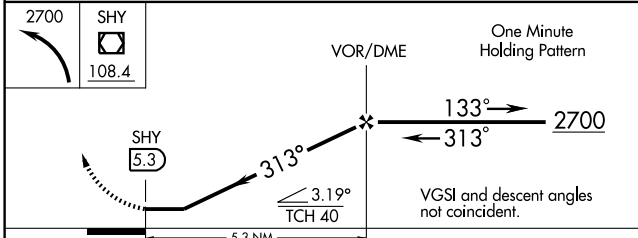
KAISER (LAKE OZARK) AWOS-3 135.325	MIZZU APP CON 124.1 353.7	UNICOM 122.8 (CTAF) 0
--	-------------------------------------	--



NC-3, 22 OCT 2009 to 19 NOV 2009

NC-3, 22 OCT 2009 to 19 NOV 2009

2700 SHY 108.4	VOR/DME	One Minute Holding Pattern
----------------	---------	----------------------------



ELEV 875

MRL Rwy 14-32
 FAF to MAP 5.3 NM
 Knots: 60 90 120 150 180
 Min:Sec: 5:18 3:32 2:39 2:07 1:46

CATEGORY	A	B	C	D
S-32	1320-1	445 (500-1)	NA	
CIRCLING	1460-1	585 (600-1)	NA	

OSAGE BEACH, MISSOURI
Amdt 5 07186

OSAGE BEACH/ GRAND GLAIZE-OSAGE BEACH (K15)
38° 07'N - 92° 41'W

VOR RWY 32