

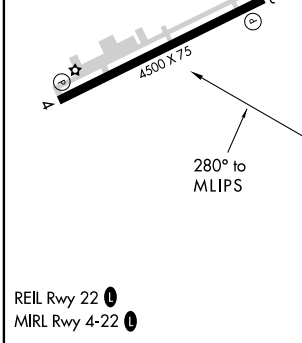
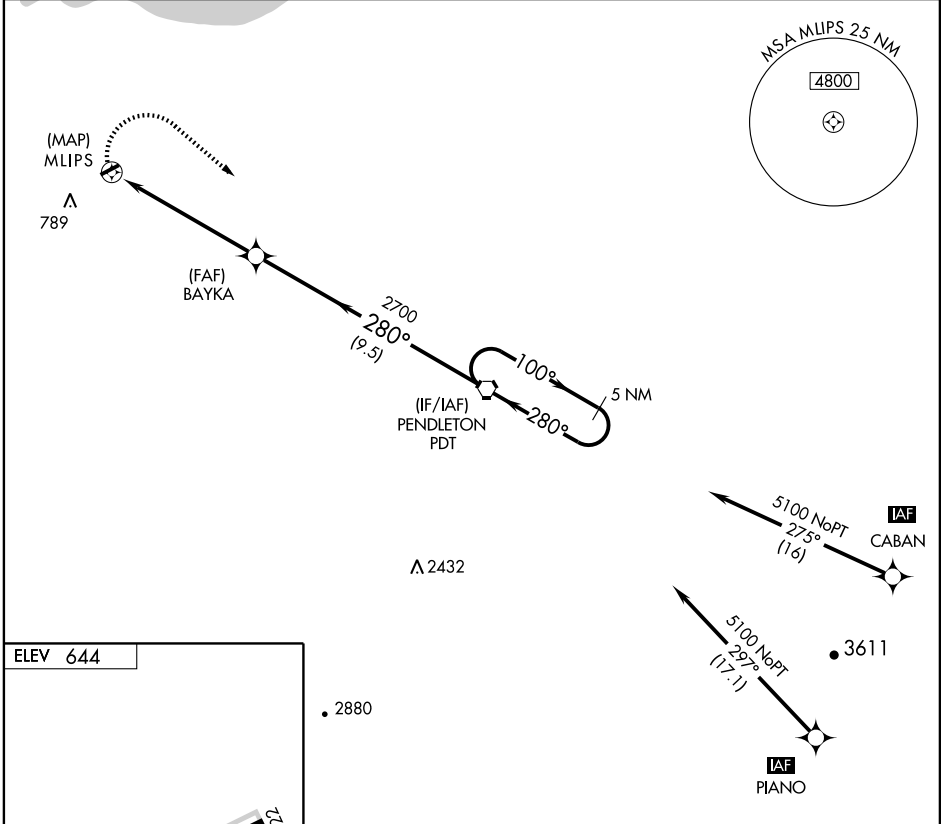
**RNAV(GPS)-B**  
HERMISTON MUNI (H.R.I)

APP CRS <b>280°</b>	Rwy Idg TDZE Apt Elev	<b>N/A</b> <b>N/A</b> <b>644</b>
------------------------	-----------------------------	--

**V** GPS or RNP-0.3 Required. DME/DME RNP-0.3 NA. MISSED APPROACH: Climbing right turn to 4000 direct PDT VORTAC and hold.

**A** NA **IAF** ARM APPROACH MODE PRIOR TO IAF.

ASOS <b>135.225</b>	CHINOOK APP CON ★ <b>133.15 379.15</b>	UNICOM <b>122.8</b> (CTAF) <b>U</b>
------------------------	---	--



ELEV 644	4000	PDT	4000	4 NM Holding Pattern
			PDT VORTAC	
	MLIPS	BAYKA		4000
	5.9 NM	9.5 NM		
CATEGORY	A	B	C	D
CIRCLING	1180-1	536 (600-1)	1180-1½ 536 (600-1½)	1200-2 556 (600-2)

NW-1, 22 OCT 2009 to 19 NOV 2009

NW-1, 22 OCT 2009 to 19 NOV 2009