

SAGINAW, MICHIGAN

AL-6474 (FAA)

RNAV (GPS) RWY 9

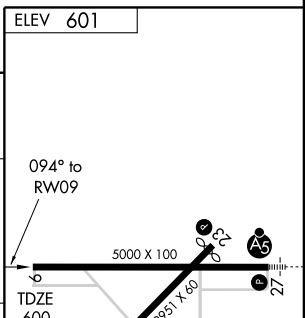
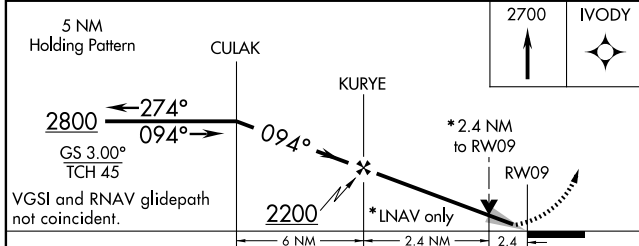
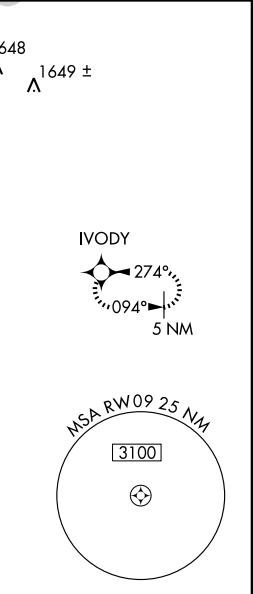
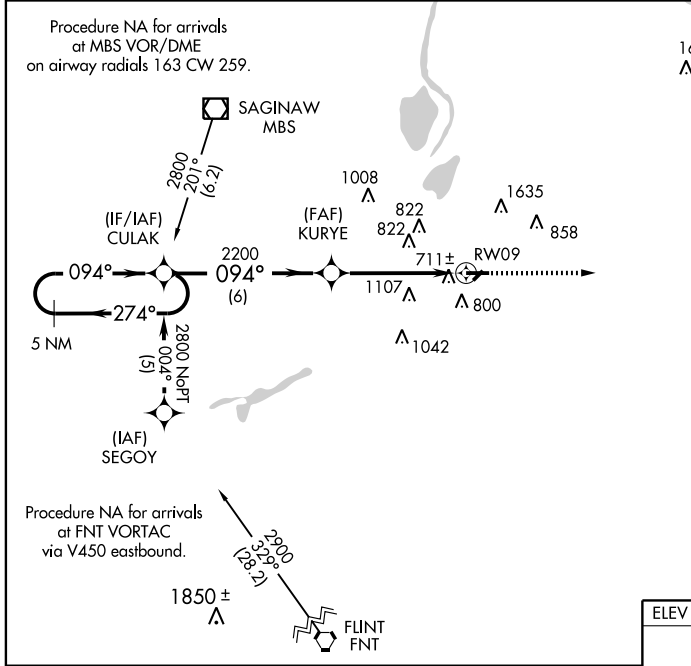
SAGINAW COUNTY H. W. BROWNE (HYX)

WAAS CH 50200 W09A	APP CRS 094°	Rwy Idg TDZE Apt Elev	5000 600 601
--	------------------------	-----------------------------	---

⚠ Circling to Rwy 5 NA at night. When local altimeter setting not received, use Saginaw MBS Intl altimeter setting and increase all DA 36 feet, increase LPV and LNAV/VNAV all Cats visibility ¼ mile, increase all MDA 40 feet, increase LNAV visibility Cat C ¼ mile and Circling visibility Cat C ¼ mile. VDP and Baro-VNAV NA when using Saginaw MBS Intl altimeter setting. For uncompensated Baro-VNAV system, procedure NA below -16°C (4°F) or above 47°C (116°F). DME/DME RNP-0.3 NA.

MISSED APPROACH:
Climb to 2700 direct IVODY and hold.

AWOS-3 118.325	SAGINAW APP CON * 120.95 235.625	GCO 121.725	UNICOM 122.8 (CTAF) 📶
--------------------------	--	-----------------------	--



CATEGORY	A	B	C	D
LPV DA	850- ³ / ₄	250 (300- ³ / ₄)		NA
LNAV/VNAV DA	1095-1 ³ / ₄	495 (500-1 ³ / ₄)		NA
LNAV MDA	1380-1 780 (800-1)	1380-1 ¹ / ₄ 780 (800-1 ¹ / ₄)	1380-2 ¹ / ₄ 780 (800-2 ¹ / ₄)	NA
CIRCLING	1380-1 779 (800-1)	1380-1 ¹ / ₄ 779 (800-1 ¹ / ₄)	1380-2 ¹ / ₄ 779 (800-2 ¹ / ₄)	NA

REIL Rwy 9 **📶**
MIRL Rwy 5-23 and 9-27 **📶**

EC-1, 22 OCT 2009 to 19 NOV 2009

EC-1, 22 OCT 2009 to 19 NOV 2009

SAGINAW, MICHIGAN
Orig-A 09239

43°26'N - 83°52'W

RNAV (GPS) RWY 9