

SAGINAW, MICHIGAN

AL-6474 (FAA)

ILS or LOC/DME RWY 27

SAGINAW COUNTY H. W. BROWNE (HYX)

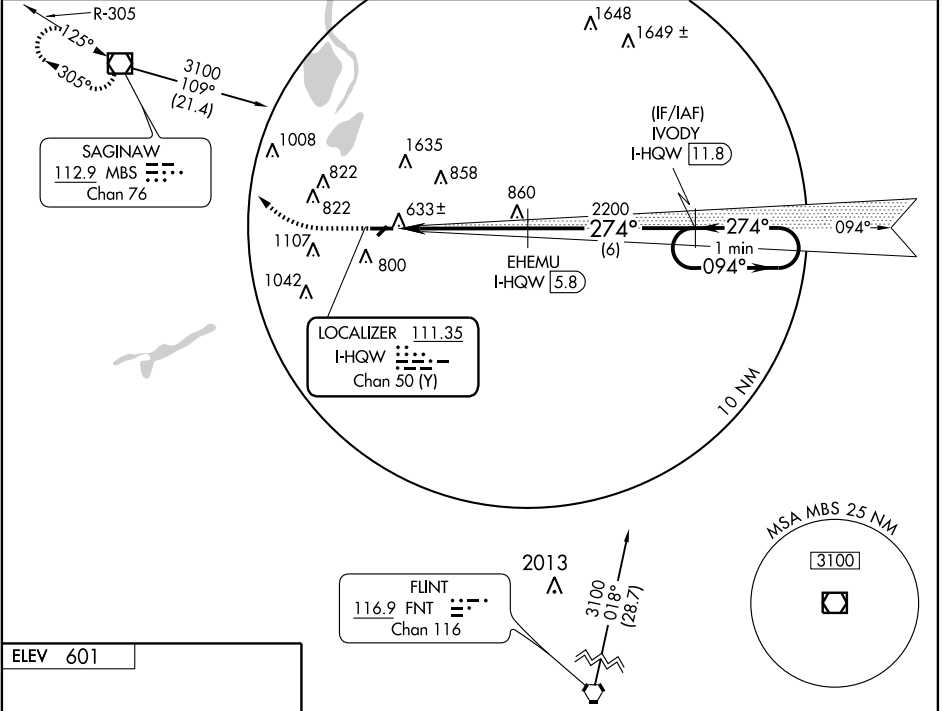
| | | | |
|--|------------------------|-----------------------------|---|
| LOC/DME I-HQW 111.35 Chan 50 (Y) | APP CRS 274° | Rwy Idg TDZE Apt Elev | 5000 600 601 |
|--|------------------------|-----------------------------|---|

ASR When local altimeter setting not received, use Saginaw MBS Intl altimeter setting and increase all DA 36 feet, increase all MDA 40 feet. VDP NA when using MBS Intl altimeter setting.

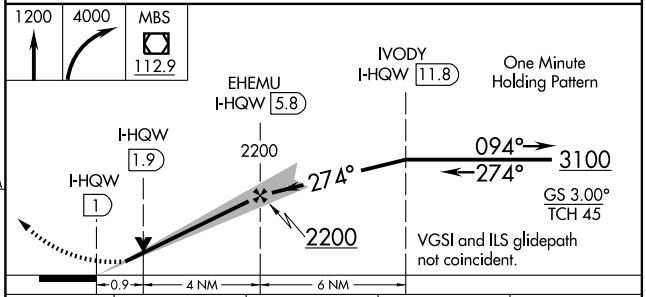
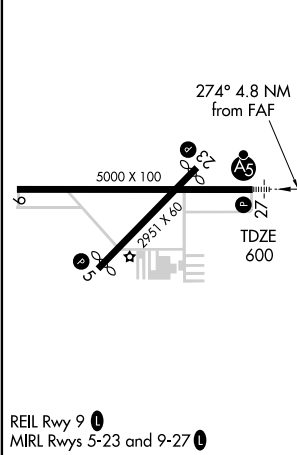


MISSED APPROACH: Climb to 1200 then climbing right turn to 4000 direct MBS VOR/DME and hold, continue climb-in-hold to 4000.

| | | | |
|--------------------------|--|-----------------------|--|
| AWOS-3 118.325 | SAGINAW APP CON * 120.95 235.625 | GCO 121.725 | UNICOM 122.8 (CTAF) U |
|--------------------------|--|-----------------------|--|



| |
|----------|
| ELEV 601 |
|----------|



| CATEGORY | A | B | C | D |
|----------|--------|-------------------|----------------------|----|
| S-ILS 27 | | 800-½ 200 (200-½) | | NA |
| S-LOC 27 | | 900-½ 300 (300-½) | | NA |
| CIRCLING | 1100-1 | 499 (500-1) | 1100-1½ 499 (500-1½) | NA |

SAGINAW, MICHIGAN
Orig-A 09239

43°26'N - 83°52'W

SAGINAW COUNTY H. W. BROWNE (HYX)

ILS or LOC/DME RWY 27

EC-1, 22 OCT 2009 to 19 NOV 2009

EC-1, 22 OCT 2009 to 19 NOV 2009