

KENTON, OHIO

AL-6473 (FAA)

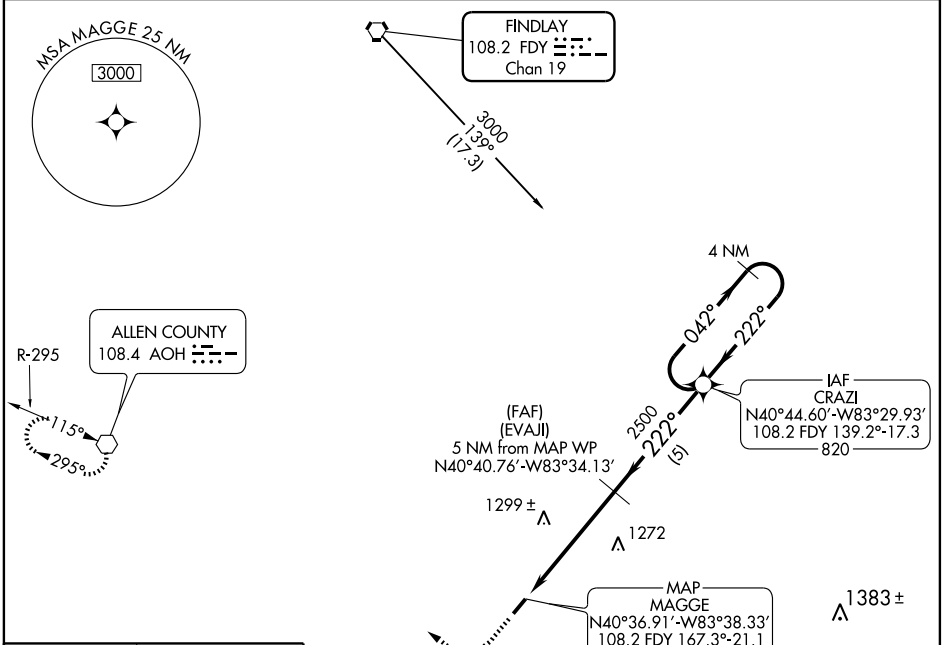
VOR/DME RNAV or GPS RWY 22

KENTON/HARDIN COUNTY (I95)

VORTAC FDY 108.2 Chan 19	APP CRS 222°	Rwy Idg TDZE Apt Elev	4201 1030 1030
---------------------------------------	------------------------	-----------------------------	---

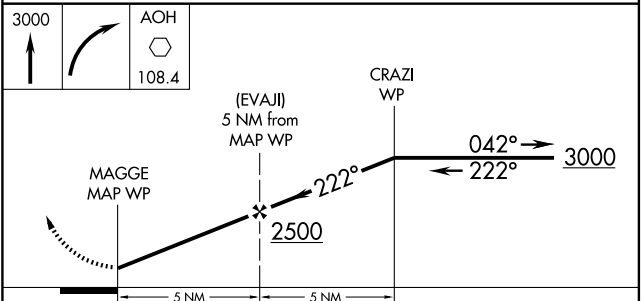
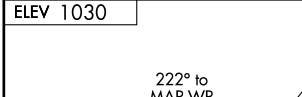
NA Use Findlay altimeter setting. MISSED APPROACH: Climb to 3000 then right turn direct AOH VOR and hold.

FINDLAY ASOS 124.425	INDIANAPOLIS CENTER 128.075 269.0	UNICOM 122.8 (CTAF)
--------------------------------	---	-------------------------------



EC-2, 22 OCT 2009 to 19 NOV 2009

EC-2, 22 OCT 2009 to 19 NOV 2009



CATEGORY	A	B	C	D
S-22	1660-1 630 (700-1)	1660-1¼ 630 (700-1¼)	1660-1¾ 630 (700-1¾)	1660-2 630 (700-2)
CIRCLING	1660-1 630 (700-1)	1660-1¼ 630 (700-1¼)	1660-1¾ 630 (700-1¾)	1660-2 630 (700-2)

KENTON, OHIO
Amdt 1A 05160

40°37'N - 83°39'W

KENTON/HARDIN COUNTY (I95)

VOR/DME RNAV or GPS RWY 22