

SAND SPRINGS, OKLAHOMA

AL-6472 (FAA)

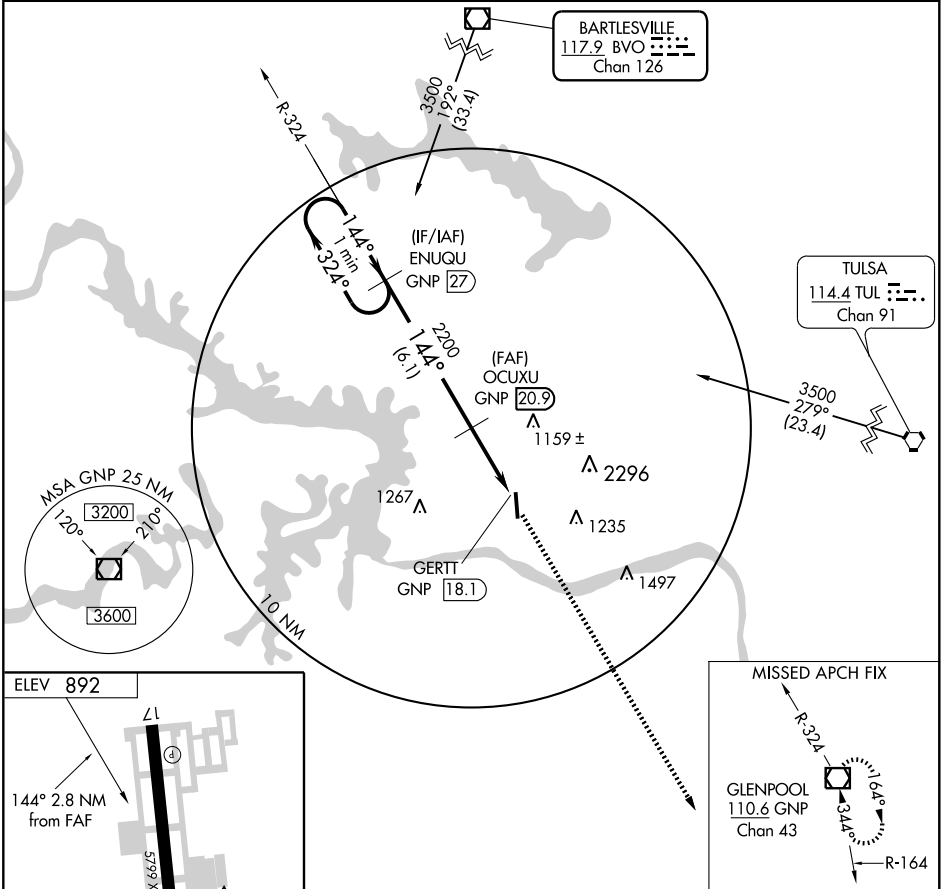
VOR/DME GNP 110.6 Chan 43	APP CRS 144°	Rwy Idg TDZE Apt Elev	N/A N/A 892
---	------------------------	-----------------------------	--

VOR/DME-A

SAND SPRINGS/ WILLIAM R. POGUE MUNI (OWP)

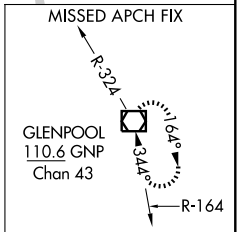
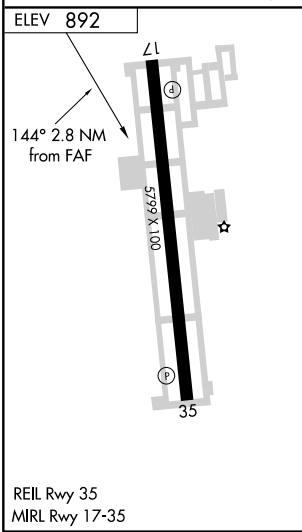
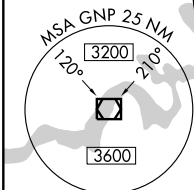
NA When local altimeter setting not received, use Tulsa Intl altimeter setting and increase MDA 60 feet and Cat C visibility ¼ mile. MISSED APPROACH: Climb to 3000 via GNP R-324 to GNP VOR/DME and hold.

AWOS-3 118.325	TULSA APP CON 124.0 338.3	UNICOM 122.7 (CTAF)
--------------------------	-------------------------------------	-------------------------------



SC-1, 22 OCT 2009 to 19 NOV 2009

SC-1, 22 OCT 2009 to 19 NOV 2009



One Minute Holding Pattern	ENUQU GNP 27		OCUXU GNP 20.9		3000	GNP
	← 324°		144° →		↑	□
	2600		2200			110.6
		6.1 NM		2.8 NM		
CATEGORY	A	B	C	D		
CIRCLING	1440-1	548 (600-1)	1440-1½	548 (600-1½)		NA

SAND SPRINGS, OKLAHOMA
Amdt 3 09071

SAND SPRINGS/ WILLIAM R. POGUE MUNI (OWP)
36° 11' N-96° 09' W
VOR/DME-A