

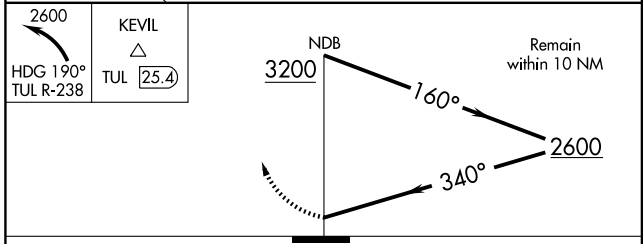
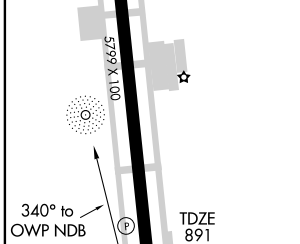
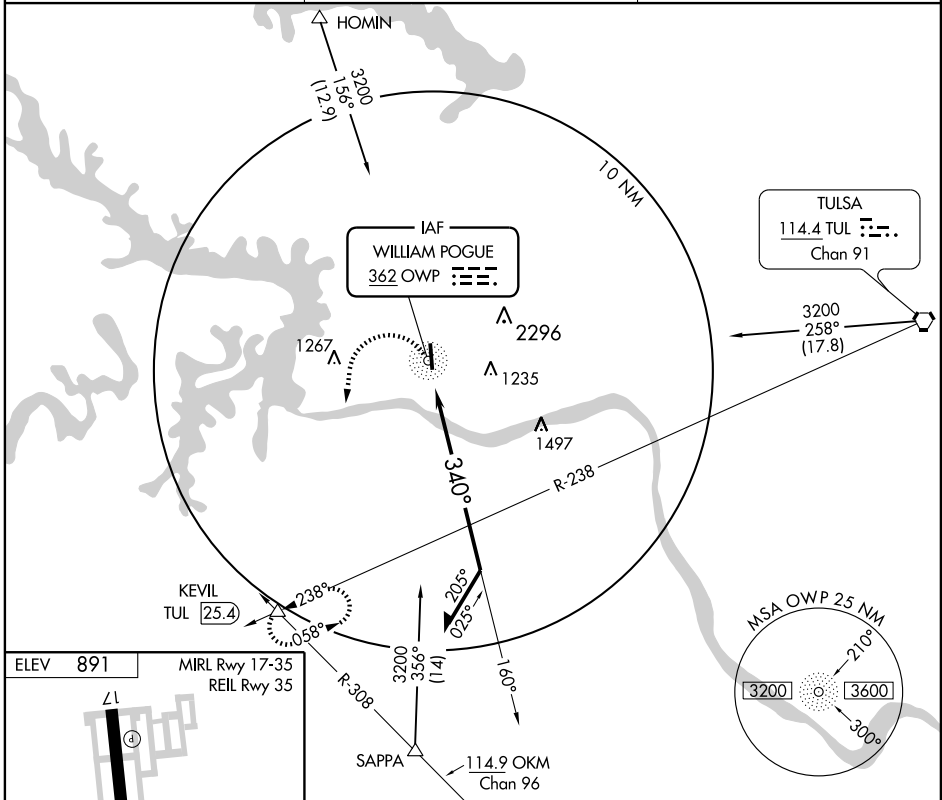
NDB RWY 35

SAND SPRINGS/ WILLIAM R. POGUE MUNI (OWP)

NDB OWP 362	APP CRS 340°	Rwy Idg 5799
		TDZE 891
		Apt Elev 891

▼ When local altimeter setting not received, use Tulsa Intl altimeter setting and increase all MDA 60 feet.
▲ NA MISSED APPROACH: Climbing left turn to 2600 via heading 190° and TUL VORTAC R-238 to KEVIL INT/TUL 25.4 DME and hold.

AWOS-3 118.325	TULSA APP CON 124.0 338.3	UNICOM 122.7 (CTAF)
--------------------------	-------------------------------------	-------------------------------



CATEGORY	A	B	C	D
S-35	1520-1	629 (700-1)	1520-1 ³ / ₄ 629 (700-1 ³ / ₄)	NA
CIRCLING	1520-1	629 (700-1)	1520-1 ³ / ₄ 629 (700-1 ³ / ₄)	NA

SC-1, 22 OCT 2009 to 19 NOV 2009

SC-1, 22 OCT 2009 to 19 NOV 2009