

VOR/DME RWY 14

JACKSONVILLE/CHEROKEE COUNTY (JSO)

VOR FZT 111.4 Chan 51	APP CRS 121°	Rwy Idg TDZE Apt Elev	5011 677 677
---	------------------------	-----------------------------	---

⚠ If local altimeter setting not received, use Palestine Muni altimeter setting and increase all MDAs 100 feet.

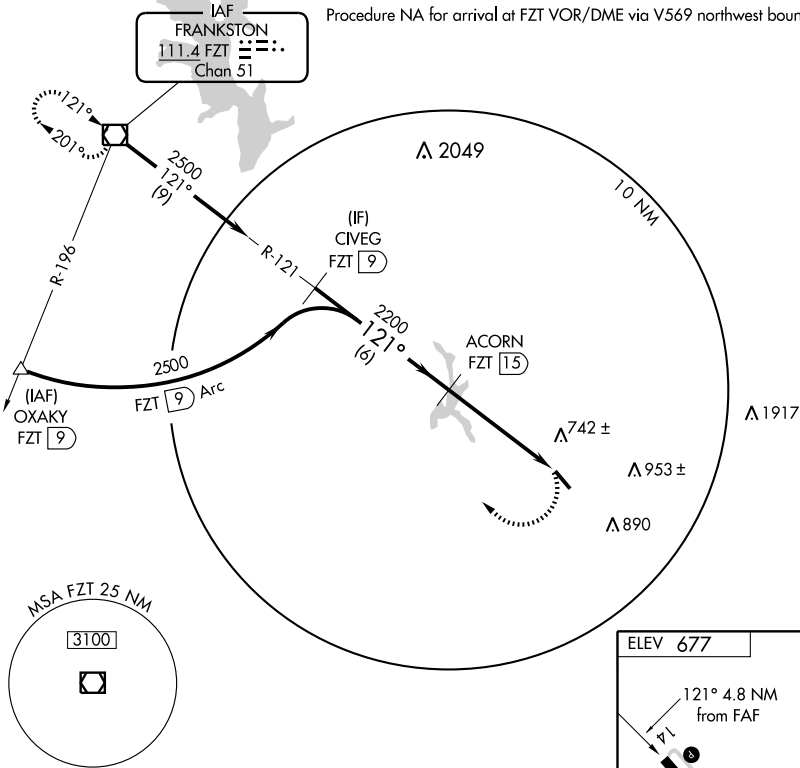
MISSED APPROACH: Climbing right turn to 2500 direct FZT VOR/DME and hold.

AWOS-3
119.075

LONGVIEW APP CON *
128.75 379.15

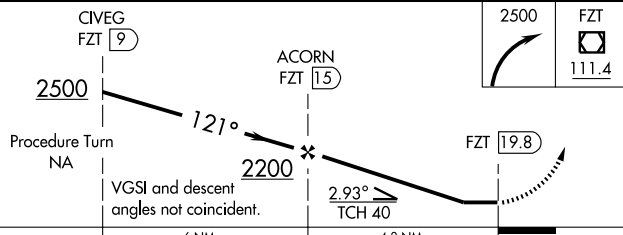
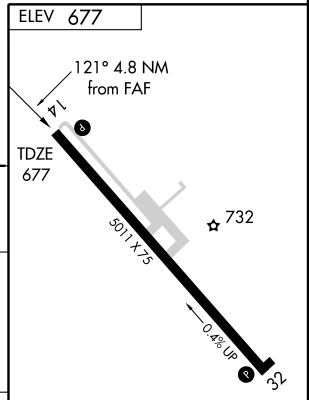
UNICOM
122.7 (CTAF) 0

Procedure NA for arrival at FZT VOR/DME via V569 northwest bound.



SC-5, 22 OCT 2009 to 19 NOV 2009

SC-5, 22 OCT 2009 to 19 NOV 2009



CATEGORY	A	B	C	D
S-14	1080-1	403 (500-1)	1080-1¼ 403 (500-1¼)	NA
CIRCLING	1080-1 403 (500-1)	1140-1 463 (500-1)	1140-1½ 463 (500-1½)	NA

REIL Rwy 14 0	MIRL Rwy 14-32 0				
Knots	60	90	120	150	180
Min:Sec					