

RNAV (GPS) RWY 14

JACKSONVILLE/ CHEROKEE COUNTY (JSO)

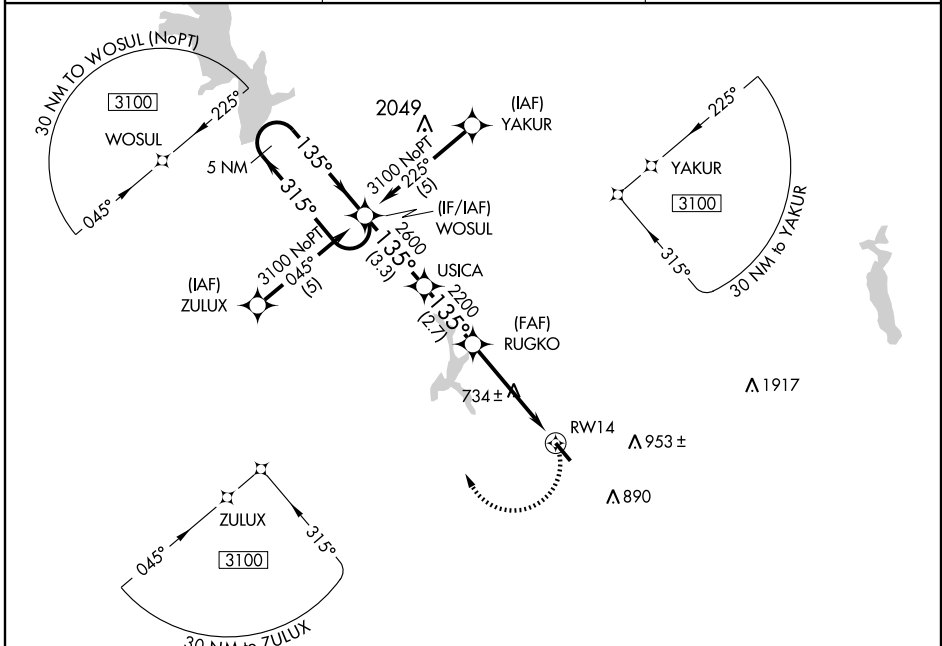
APP CRS 135°	Rwy Idg 5011
	TDZE 677
	Apt Elev 677

▼ If local altimeter setting not received, use Palestine Muni altimeter setting and increase all MDAs 100 feet. VDP NA when using Palestine Muni altimeter setting. DME/DME RNP-0.3 NA.

▲

MISSED APPROACH: Climbing right turn to 3100 direct WOSUL and hold.

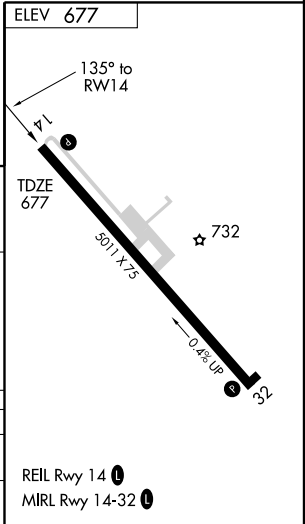
AWOS-3 119.075	LONGVIEW APP CON ★ 128.75 379.15	UNICOM 122.7 (CTAF) 0
--------------------------	--	---------------------------------



SC-5, 22 OCT 2009 to 19 NOV 2009

SC-5, 22 OCT 2009 to 19 NOV 2009

5 NM Holding Pattern		VGSi and descent angles not coincident.		3100	WOSUL
		WOSUL	USICA	RUGKO	1.2 NM to RWY 14
		3.3 NM	2.7 NM	3.4 NM	1.2
CATEGORY	A	B	C	D	
LNAV MDA	1080-1	403 (500-1)	1080-1¼ 403 (500-1¼)	NA	
CIRCLING	1080-1 403 (500-1)	1140-1 463 (500-1)	1140-1½ 463 (500-1½)	NA	



REIL Rwy 14 0
MIRL Rwy 14-32 0