

NEW SMYRNA BEACH, FLORIDA

AL-6459 (FAA)

RNAV (GPS) RWY 7

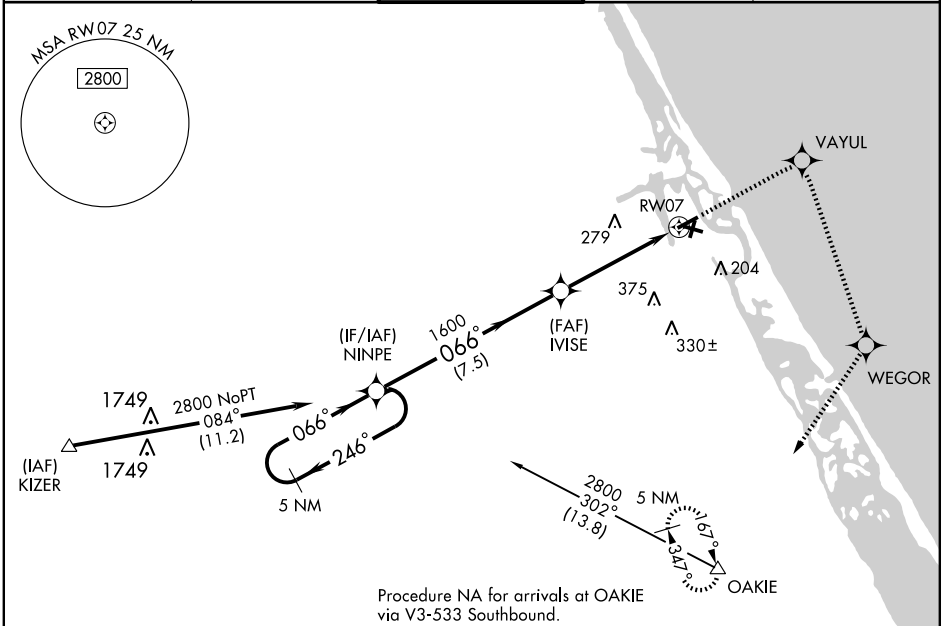
NEW SMYRNA BEACH MUNI (EVB)

APP CRS	Rwy ldg	4665
066°	TDZE	9
	Apt Elev	10

▲ NA Use Daytona Beach Intl altimeter setting; if not received, use Orlando Sanford Intl altimeter setting and increase all MDAs 40 feet. Visibility reduction by helicopters NA. DME/DME RNP-0.3 NA.

MISSED APPROACH: Climb to 2800 direct VAYUL and right turn via 165° track to WEGOR and via 218° track to OAKIE and hold.

ATIS 124.625	DAYTONA APP CON 125.35 322.3	NEW SMYRNA TOWER★ 119.675(CTAF) 0	GND CON 121.325	UNICOM 122.95
------------------------	--	---	---------------------------	-------------------------

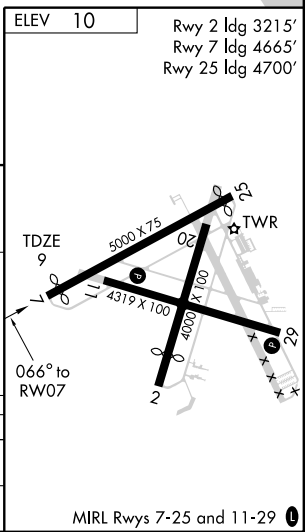
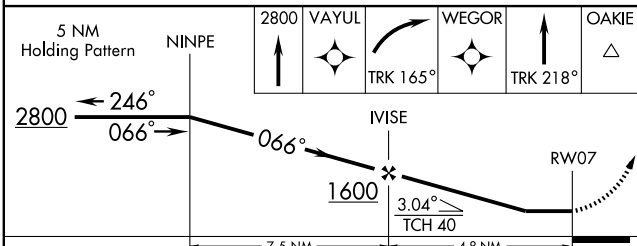


Procedure NA for arrivals at OAKIE via V3-533 Southbound.

SE-3, 22 OCT 2009 to 19 NOV 2009

SE-3, 22 OCT 2009 to 19 NOV 2009

ELEV 10	Rwy 2 ldg 3215'
	Rwy 7 ldg 4665'
	Rwy 25 ldg 4700'



CATEGORY	A	B	C	D
LNVA MDA	440-1	431 (500-1)	440-1½ 431 (500-1¼)	440-1½ 431 (500-1½)
CIRCLING	440-1 430 (500-1)	460-1 450 (500-1)	580-1½ 570 (600-1½)	620-2 610 (700-2)

MIRL Rwy 7-25 and 11-29 0

NEW SMYRNA BEACH, FLORIDA
Orig 08269

29°03'N-80°57'W

NEW SMYRNA BEACH MUNI (EVB)
RNAV (GPS) RWY 7