

# RNAV (GPS) RWY 25

NEW SMYRNA BEACH MUNI (EVB)

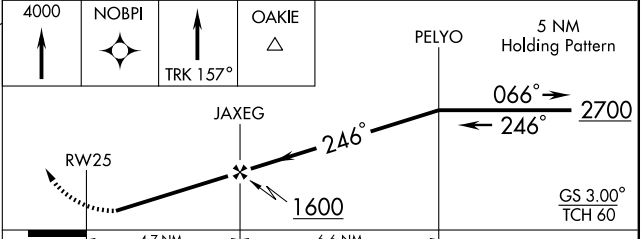
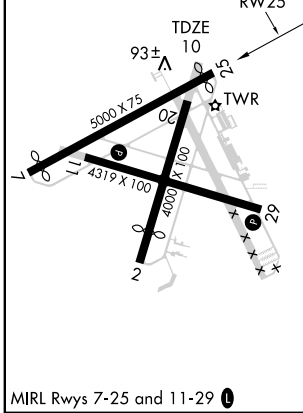
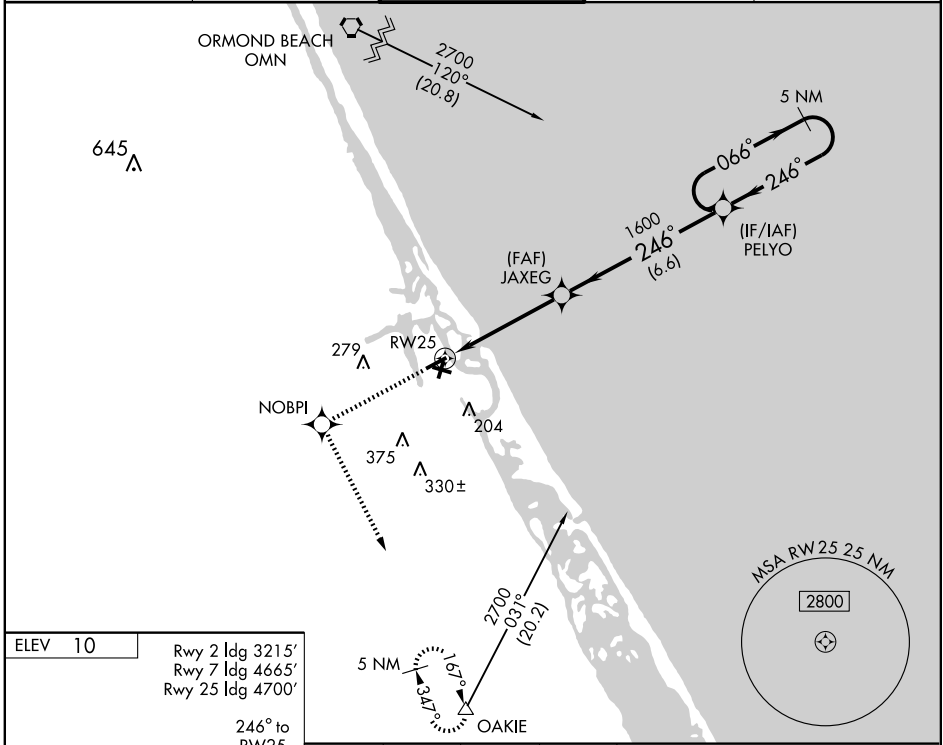
WAAS CH <b>50500</b> <b>W25A</b>	APP CRS <b>246°</b>	Rwy Idg <b>4700</b> TDZE <b>10</b> Apt Elev <b>10</b>
--	------------------------	---

**NA**  
ASR

Use Daytona Beach Intl altimeter setting; if not received, use Orlando Sanford Intl altimeter setting and increase DA to 337 feet and all MDAs 40 feet. DME/DME RNP-0.3 NA.

MISSED APPROACH: Climb to 4000 direct NOBPI and via 157° track to OAKIE and hold, continue climb-in-hold to 4000.

ATIS <b>124.625</b>	DAYTONA APP CON <b>125.35 322.3</b>	<b>NEW SMYRNA TOWER*</b> <b>119.675(CTAF)</b>	GND CON <b>121.325</b>	UNICOM <b>122.8</b>
------------------------	--	--	---------------------------	------------------------



CATEGORY	A	B	C	D
LPV DA		303-1	293 (300-1)	NA
LNAV MDA		380-1	370 (400-1)	NA
CIRCLING	440-1 430 (500-1)	460-1 450 (500-1)	580-1½ 570 (600-1½)	NA

SE-3, 22 OCT 2009 to 19 NOV 2009

SE-3, 22 OCT 2009 to 19 NOV 2009