

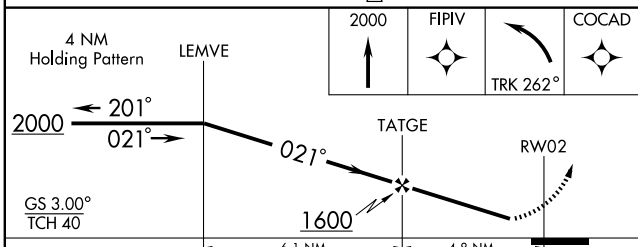
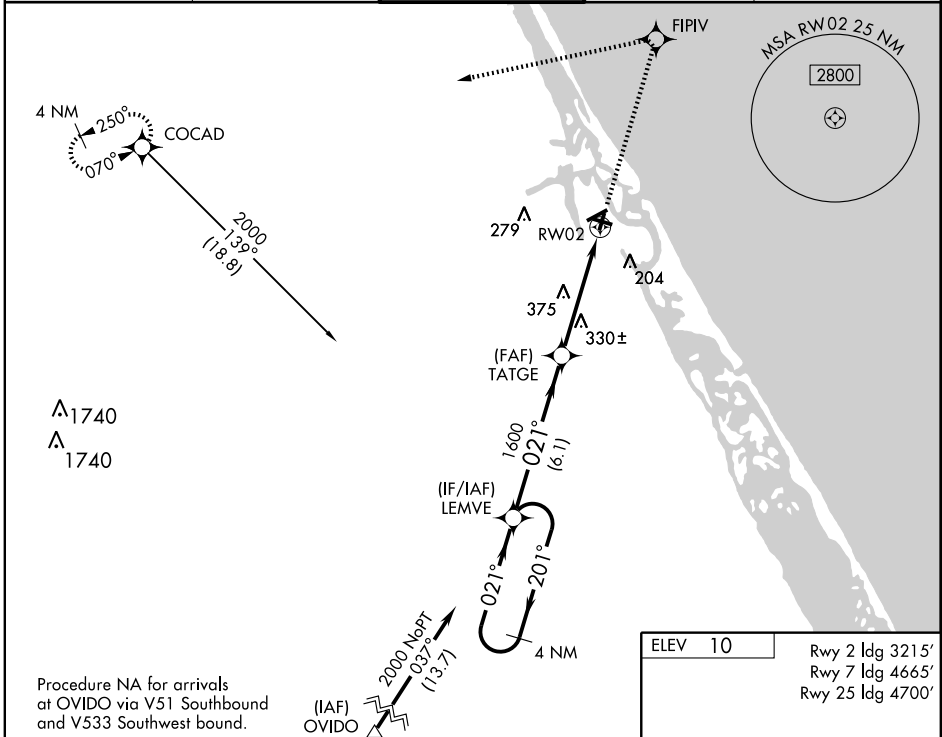
RNAV (GPS) RWY 2

NEW SMYRNA BEACH MUNI (EVB)

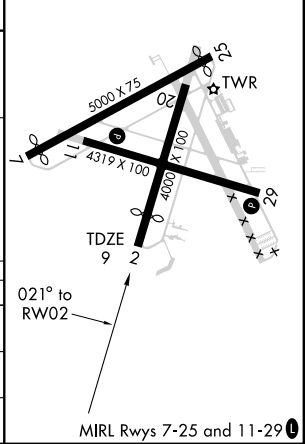
WAAS CH 45900 W02A	APP CRS 021°	Rwy ldg 3215 TDZE 9 Apt Elev 10
--	------------------------	--

▼ Use Daytona Beach Intl altimeter setting; if not received, use Orlando Sanford Intl altimeter setting and increase DA to 370 feet and all MDAs 40 feet.
▲ NA Visibility reduction by helicopters NA. DME/DME RNP-0.3 NA.
ASR MISSED APPROACH: Climb to 2000 direct FIPIV and left turn via 262° track to COCAD and hold.

ATIS 124.625	DAYTONA APP CON 125.35 322.3	NEW SMYRNA TOWER★ 119.675(CTAF) 0	GND CON 121.325	UNICOM 122.8
------------------------	--	--	---------------------------	------------------------



ELEV 10	Rwy 2 ldg 3215'
	Rwy 7 ldg 4665'
	Rwy 25 ldg 4700'



CATEGORY	A	B	C	D
LPV DA	336-1¼		327 (400-1¼)	
LNVA MDA	700-1	691 (700-1)	700-2 691 (700-2)	700-2¼ 691 (700-2¼)
CIRCLING	700-1¼	690 (700-1¼)	700-2 690 (700-2)	700-2¼ 690 (700-2¼)

SE-3, 22 OCT 2009 to 19 NOV 2009

SE-3, 22 OCT 2009 to 19 NOV 2009