

NEW SMYRNA BEACH, FLORIDA

AL-6459 (FAA)

NDB EVB 417	APP CRS 304°	Rwy Idg TDZE Apt Elev	4319 10 10
-----------------------	------------------------	-----------------------------	---------------------------------------

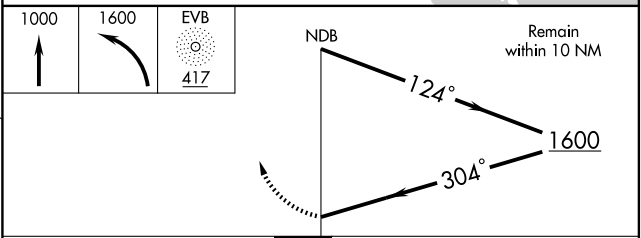
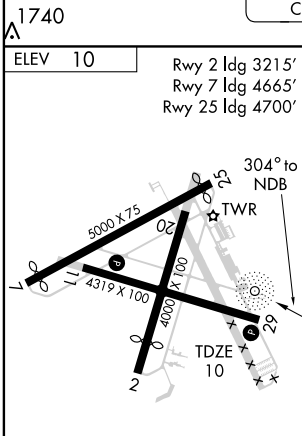
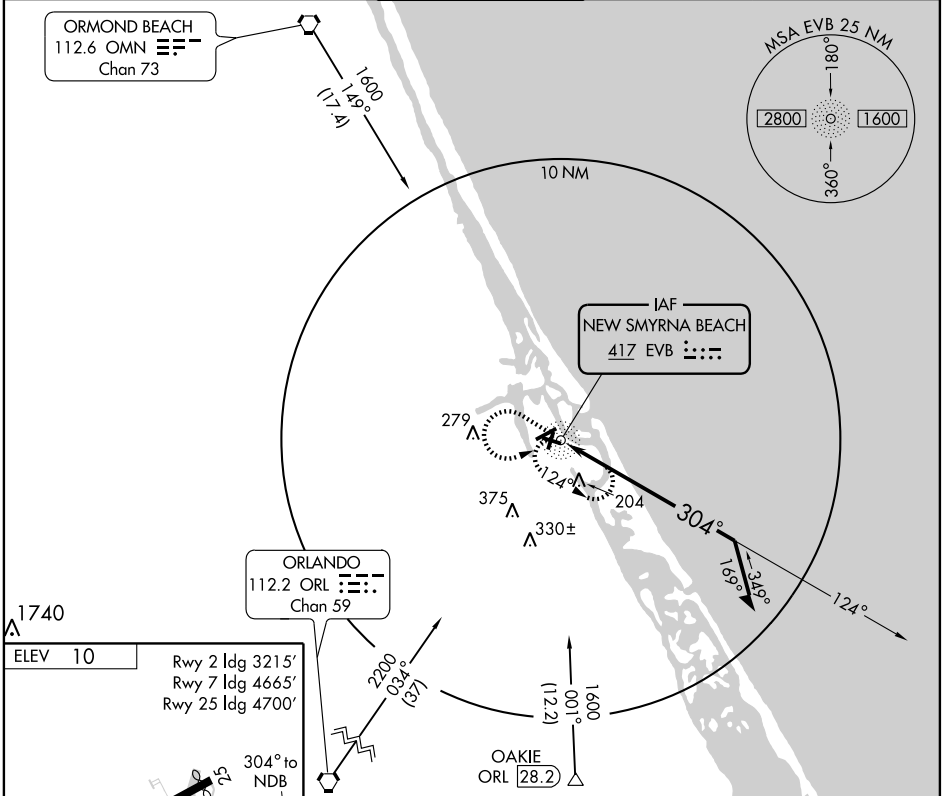
NDB RWY 29

NEW SMYRNA BEACH MUNI (EVB)

NA ASR Use Daytona Beach Intl altimeter setting; if not received, use Orlando Sanford Intl altimeter setting and increase all MDAs 40 feet. Visibility reduction by helicopters NA.

MISSED APPROACH: Climb to 1000 then climbing left turn to 1600 direct EVB NDB and hold.

ATIS 124.625	DAYTONA APP CON 125.35 322.3	NEW SMYRNA TOWER* 119.675 (CTAF) 0	GND CON 121.325	UNICOM 122.95
------------------------	--	---	---------------------------	-------------------------



MIRL Rwy 7-25 and 11-29 0					
Knots	60	90	120	150	180
Min:Sec					
CATEGORY	A	B	C	D	
S-29	640-1	630 (700-1)	640-1¾ 630 (700-1¾)	640-2 630 (700-2)	
CIRCLING	640-1	630 (700-1)	640-1¾ 630 (700-1¾)	640-2 630 (700-2)	

NEW SMYRNA BEACH, FLORIDA
Amdt 2 08269

29°03'N-80°57'W

NEW SMYRNA BEACH MUNI (EVB)
NDB RWY 29

SE-3, 22 OCT 2009 to 19 NOV 2009

SE-3, 22 OCT 2009 to 19 NOV 2009