

# NDB or GPS RWY 35

JONESBORO (F88)

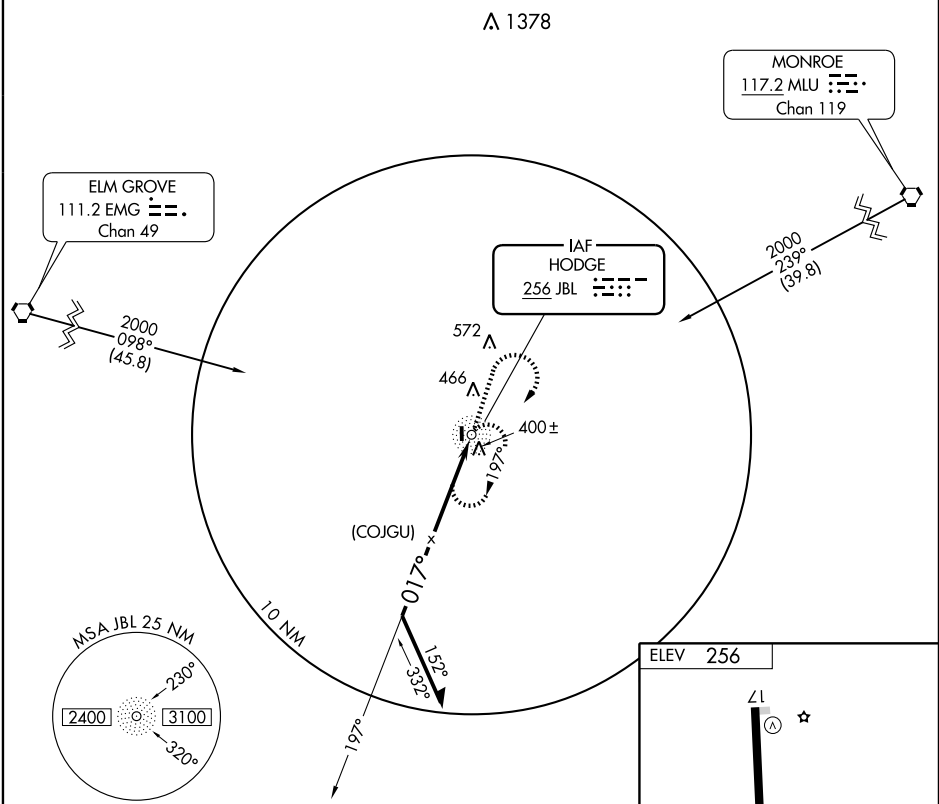
APP CRS <b>017°</b>	Rwy Idg TDZE Apt Elev	<b>3203</b> <b>256</b> <b>256</b>
------------------------	-----------------------------	---

Use Monroe altimeter setting. MISSED APPROACH: Climb to 2000 then right turn direct JBL NDB and hold.

**▲ NA**

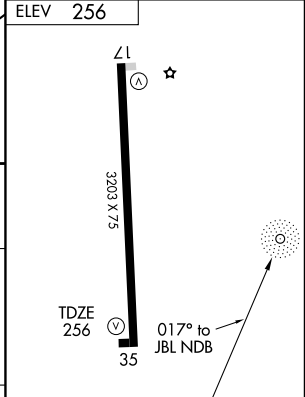
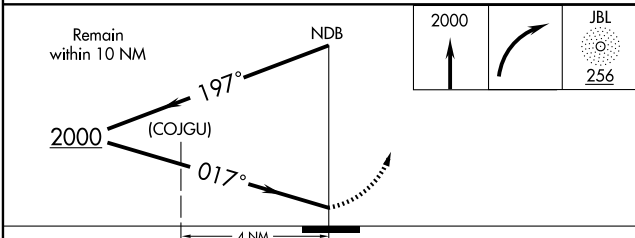
MONROE APP CON \* (CTAF)

**126.9 307.9** **122.9 122.8 ●**



SC-4, 22 OCT 2009 to 19 NOV 2009

SC-4, 22 OCT 2009 to 19 NOV 2009



CATEGORY	A	B	C	D
S-35	940-1 684 (700-1)		940-2 684 (700-2)	NA
CIRCLING	960-1 704 (800-1)		960-2 704 (800-2)	NA

REIL Rwy 17 **●**

MIRL Rwy 17-35 **●**

Knots	60	90	120	150	180
Min:Sec					