

CASSVILLE, MISSOURI

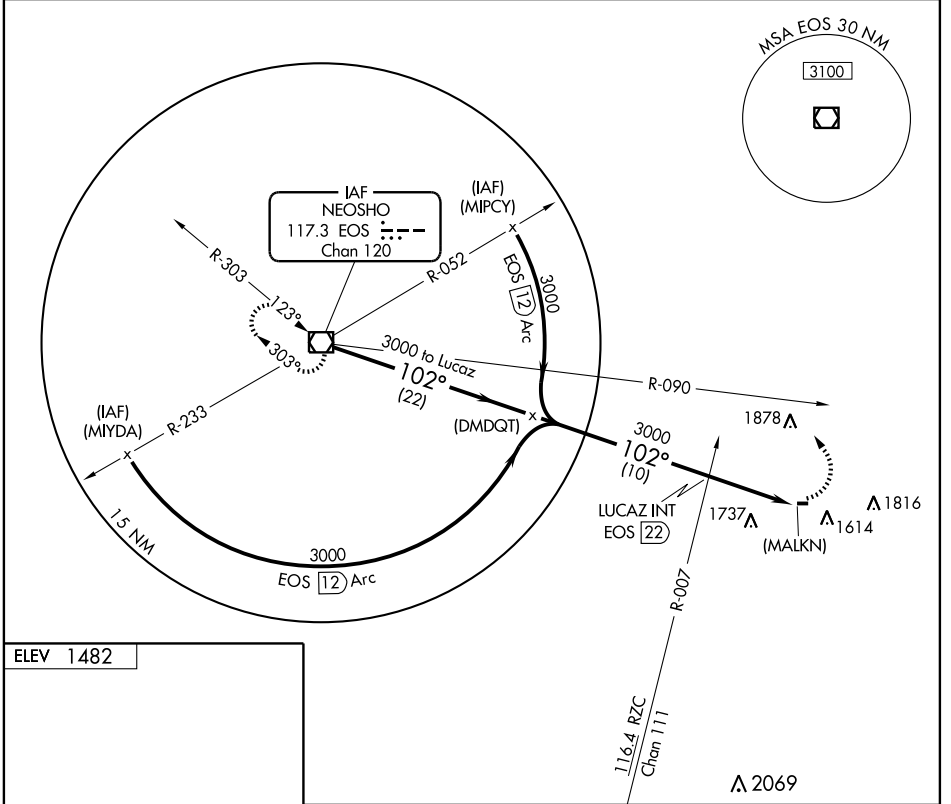
AL-6454 (FAA)

# VOR or GPS RWY 9

CASSVILLE MUNI (94K)

VOR/DME EOS <b>117.3</b> Chan <b>120</b>	APP CRS <b>102°</b>	Rwy Idg <b>3600</b> TDZE <b>1482</b> Apt Elev <b>1482</b>
--	------------------------	---

<b>NA</b> Use Joplin, MO altimeter setting.	MISSED APPROACH: Climbing left turn to 3000 via heading 320° and EOS R-090 to EOS VOR/DME and hold.
SPRINGFIELD APP CON <b>124.95 318.2</b>	CTAF <b>122.9</b>



NC-3, 22 OCT 2009 to 19 NOV 2009

NC-3, 22 OCT 2009 to 19 NOV 2009

**ELEV 1482**

MIRL Rwy 9-27

FAF to MAP 5 NM

Knots	60	90	120	150	180
Min:Sec	5:00	3:20	2:30	2:00	1:40

VOR/DME	3000	102°	3000	EOS R-090 117.3	EOS 117.3
Procedure Turn	NA				
	22 NM		5 NM		
CATEGORY	A	B	C	D	
S-9	2160-1 678 (700-1)	2160-1¼ 678 (700-1¼)	2160-2 678 (700-2)	NA	
CIRCLING	2160-1 678 (700-1)	2160-1¼ 678 (700-1¼)	2160-2 678 (700-2)	NA	

CASSVILLE, MISSOURI  
Amdt 1C 08157

36°42'N-93°54'W

# VOR or GPS RWY 9

CASSVILLE MUNI (94K)