

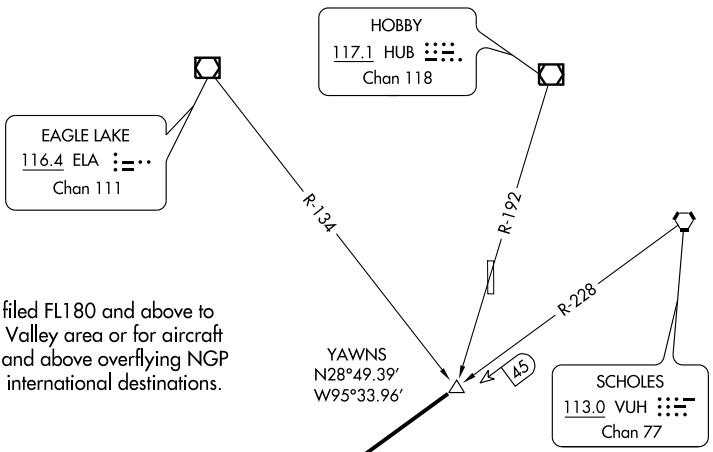
(NGP2.NGP) 08157

# TRUAX TWO DEPARTURE

SL-6453 (FAA)

ANGLETON/ BRAZORIA COUNTY (L.B.X)  
HOUSTON, TEXAS

ASOS  
119.925  
CLNC DEL  
125.2  
HOUSTON DEP CON  
134.45 284.0  
CTAF  
123.0



Note: For aircraft filed FL180 and above to Rio Grande Valley area or for aircraft filed FL180 and above overflying NGP VORTAC to international destinations.

TAKE-OFF MINIMUMS:  
Rwy 17, 35 standard.

TAKE-OFF OBSTACLES  
Rwy 35, Tree 1510' from DER, 721' left of centerline,  
48' AGL/ 68' MSL.

NOTE: Chart not to scale.

NOTE: Radar Required.

## DEPARTURE ROUTE DESCRIPTION

When entering controlled airspace, fly assigned heading for vectors to YAWNS INT, maintain 4000', expect filed altitude 10 minutes after departure. Thence. . . .

. . . . via VUH R-228 and NGP R-047 to NGP VORTAC.

TRUAX TWO DEPARTURE  
(NGP2.NGP) 08157

HOUSTON, TEXAS  
ANGLETON/ BRAZORIA COUNTY (L.B.X)

SC-5, 22 OCT 2009 to 19 NOV 2009

SC-5, 22 OCT 2009 to 19 NOV 2009