

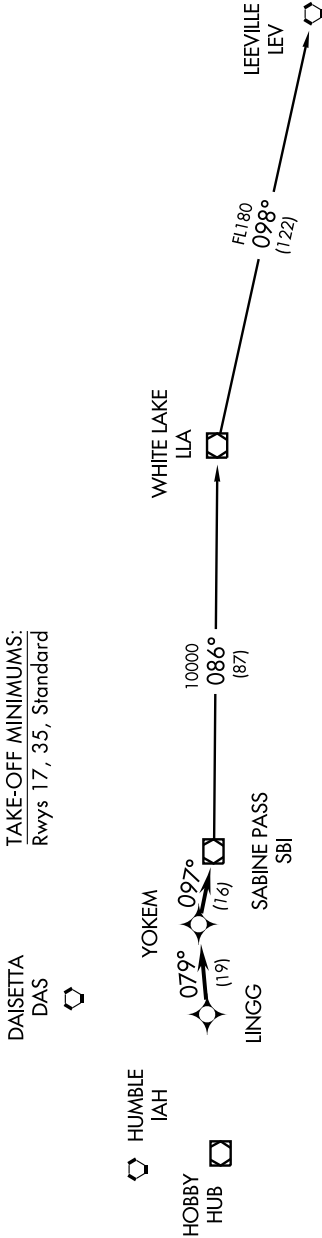
SABINE PASS ONE DEPARTURE (RNAV)

SC-5, 22 OCT 2009 to 19 NOV 2009

Note: RADAR Required.
Note: RNAV 1.
Note: DME/DME/IRU or GPS Required.
Note: For non-GPS equipped aircraft, BPT and LCH must be operational.

TAKE-OFF MINIMUMS:
Rwys 17, 35, Standard

ASOS
119.925
CINCDEL
125.2
HOUSTON DEP CON
134.45 284.0
CTAF
123.0



DEPARTURE ROUTE DESCRIPTION

When entering controlled airspace, fly assigned heading for vectors to LINGG, maintain 4000, then via depicted route to SBI VOR/DME, thence...

... via (transition). Expect clearance to filed altitude/flight level 10 minutes after departure.

LEEVILLE TRANSITION: (SB11.LEV)
WHITE LAKE TRANSITION: (SB11.LLA)

TAKE-OFF OBSTACLES:
Rwy 35, Tree 1510' from DER, 721' left of centerline, 48' AGL/68' MSL.

NOTE: Chart not to scale.