

INDIANAPOLIS, INDIANA

AL-6452 (FAA)

# VOR RWY 34

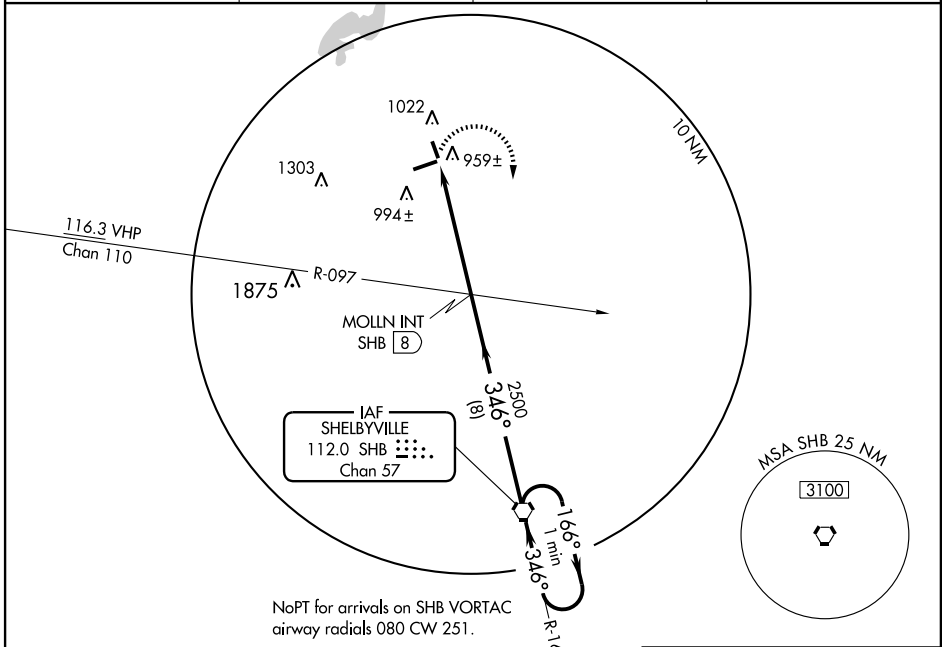
INDIANAPOLIS/MOUNT COMFORT (MQJ)

VORTAC SHB	APP CRS	Rwy Idg	3901
112.0	346°	TDZE	858
Chan 57		Apt Elev	862

**⚠** When local altimeter setting not received, use Indianapolis Intl altimeter setting, and increase all MDA 60 feet, increase S-34 Cat C visibility ¼ mile.  
**⚠ NA** VDP NA when using Indianapolis Intl altimeter setting.

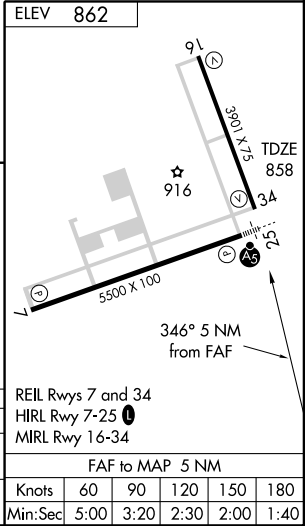
**MISSED APPROACH:** Climbing right turn to 2500 direct SHB VORTAC and hold.

AWOS-3	INDIANAPOLIS APP CON	CLNC DEL	UNICOM
124.175	127.15 317.8	119.25	122.7 (CTAF) <b>0</b>



EC-2, 22 OCT 2009 to 19 NOV 2009

EC-2, 22 OCT 2009 to 19 NOV 2009



2500	SHB	112.0	MOLLN SHB [8]	VORTAC	One Minute Holding Pattern
SHB [13]	SHB [11.7]	SHB [13]	346°	166°	2500
1.3 NM	3.7 NM	8 NM			

CATEGORY	A	B	C	D
S-34	1300-1 442 (500-1)	1300-1½ 442 (500-1½)	1300-1½ 442 (500-1½)	1300-1½ 442 (500-1½)
CIRCLING	1340-1 478 (500-1)	1340-1½ 478 (500-1½)	1420-2 558 (600-2)	

INDIANAPOLIS, INDIANA  
Amdt 2A 09239

39°51'N - 85°54'W

INDIANAPOLIS/MOUNT COMFORT (MQJ)  
**VOR RWY 34**