

INDIANAPOLIS, INDIANA

AL-6452 (FAA)

# RNAV (GPS) RWY 34

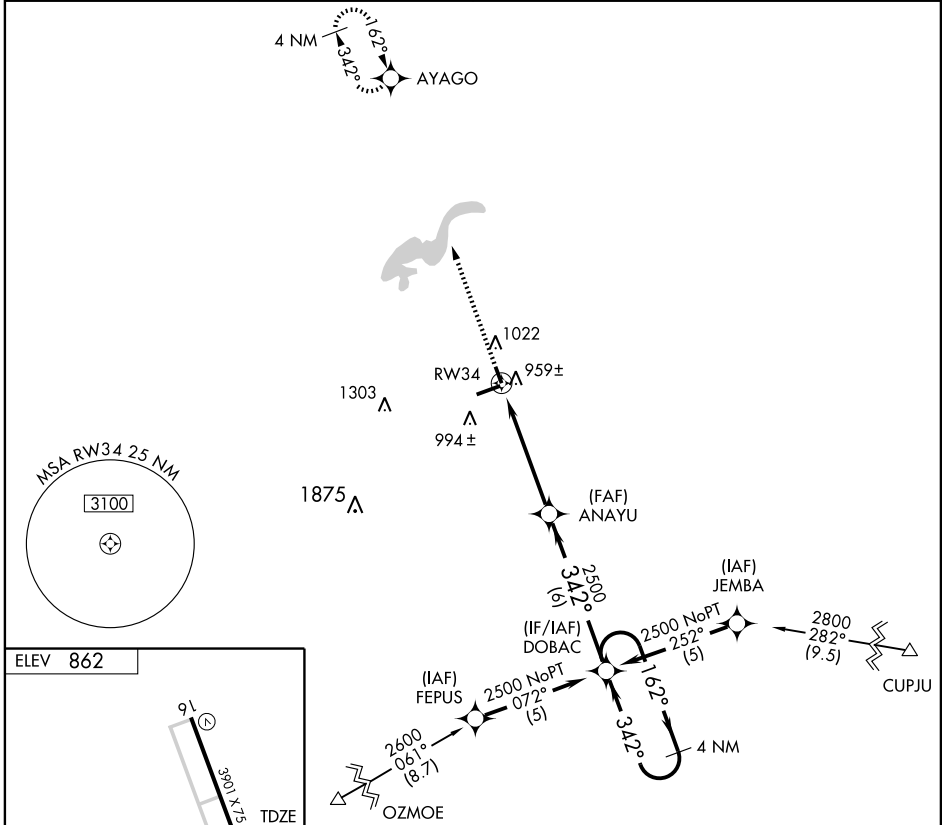
INDIANAPOLIS/MOUNT COMFORT (MQJ)

APP CRS <b>342°</b>	Rwy Idg <b>3901</b>
	TDZE <b>858</b>
	Apt Elev <b>862</b>

**▽** DME/DME RNP-0.3 NA. When local altimeter setting not received, use Indianapolis Intl altimeter setting and increase all MDA 60 feet, increase LNAV Cat C visibility ¼ mile. VDP NA when using Indianapolis altimeter setting.

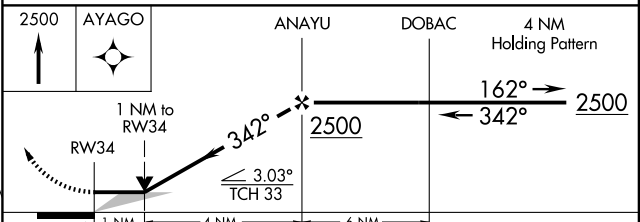
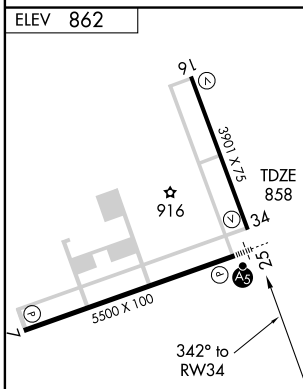
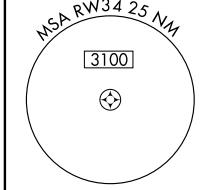
**MISSED APPROACH:** Climb to 2500 direct AYAGO and hold.

AWOS-3 <b>124.175</b>	INDIANAPOLIS APP CON <b>127.15 317.8</b>	CLNC DEL <b>119.25</b>	UNICOM <b>122.7 (CTAF) 0</b>
--------------------------	---	---------------------------	---------------------------------



EC-2, 22 OCT 2009 to 19 NOV 2009

EC-2, 22 OCT 2009 to 19 NOV 2009



CATEGORY	A	B	C	D
LNAV MDA	1220-1 362 (400-1)			1220-1¼ 362 (400-1¼)
CIRCLING	1340-1	478 (500-1)	1340-1½ 478 (500-1½)	1420-2 558 (600-2)

INDIANAPOLIS, INDIANA  
Orig-A 09239

39°51'N · 85°54'W

INDIANAPOLIS/MOUNT COMFORT (MQJ)  
**RNAV (GPS) RWY 34**