

INDIANAPOLIS, INDIANA

AL-6452 (FAA)

WAAS CH 56310 W25A	APP CRS 252°	Rwy Idg TDZE 861 Apt Elev 862	5500
--	------------------------	---	-------------

RNAV (GPS) RWY 25

INDIANAPOLIS/MOUNT COMFORT (MQJ)

▼ For inoperative MALSR, increase LNAV Cat A/B/C visibility to 1 mile and Cat D to 1 1/4 mile. When local altimeter setting not received, use Indianapolis Intl altimeter setting and increase all DA 55 feet and all MDA 60 feet, and increase all visibilities 1/2 mile. Baro-VNAV and VDP NA when using Indianapolis Intl altimeter setting.

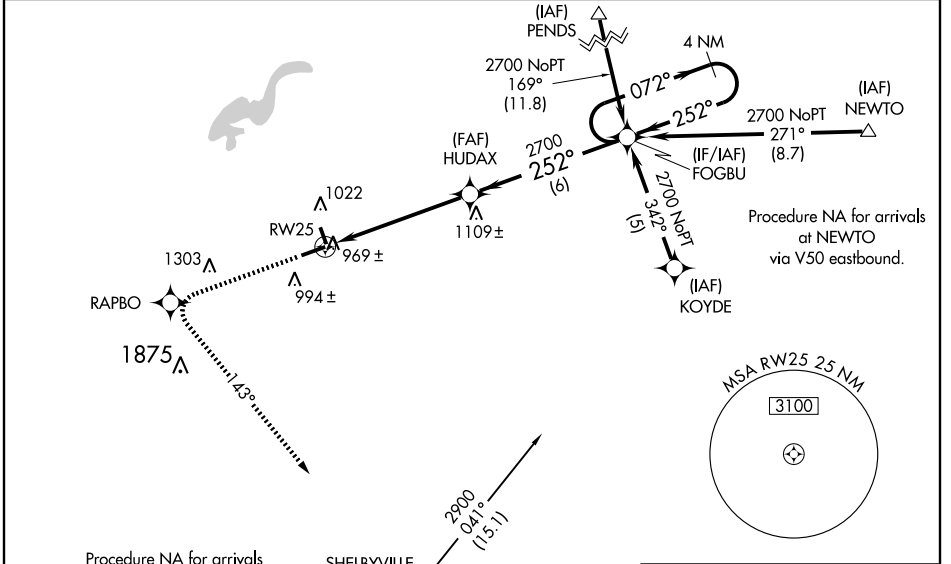
▲ NA When using Indianapolis Intl altimeter setting inoperative table does not apply. For uncompensated Baro-VNAV systems, LNAV/VNAV NA below -16°C (4°F) or above 47°C (116°F). DME/DME RNP-0.3 NA. Visibility reduction by helicopters NA.

MALSR



MISSED APPROACH:
Climb to 2900 direct RAPBO and via 143° track to SHB VORTAC and hold.

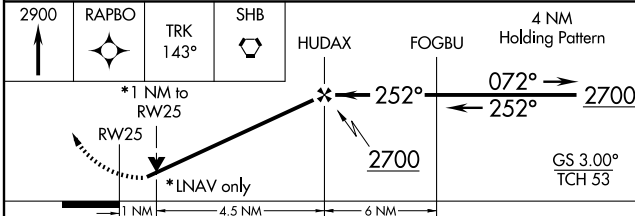
AWOS-3 124.175	INDIANAPOLIS APP CON 127.15 317.8	CLNC DEL 119.25	UNICOM 122.7 (CTAF) 1
--------------------------	---	---------------------------	---------------------------------



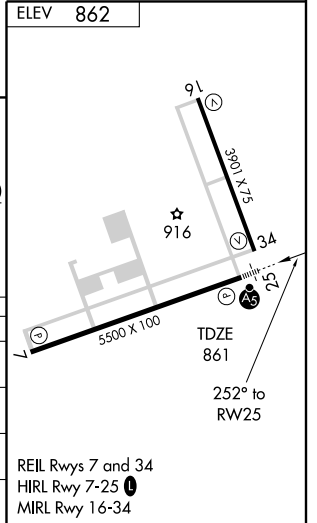
EC-2, 22 OCT 2009 to 19 NOV 2009

EC-2, 22 OCT 2009 to 19 NOV 2009

2900	RAPBO	TRK 143°	SHB	HUDAX	FOGBU	4 NM Holding Pattern
------	-------	----------	-----	-------	-------	----------------------



CATEGORY	A	B	C	D
LPV DA	1161-3/4 300 (300-3/4)			
LNAV/VNAV DA	1260-1 399 (400-1)			
LNAV MDA	1220-3/4	359 (400-3/4)	1220-1 359 (400-1)	
CIRCLING	1340-1	478 (500-1)	1340-1 1/2 478 (500-1 1/2)	1420-2 558 (600-2)



INDIANAPOLIS, INDIANA

Orig 08325

INDIANAPOLIS/MOUNT COMFORT (MQJ)

39°51'N - 85°54'W

RNAV (GPS) RWY 25