

SEMINOLE, OKLAHOMA

AL-6450 (FAA)

# NDB RWY 16

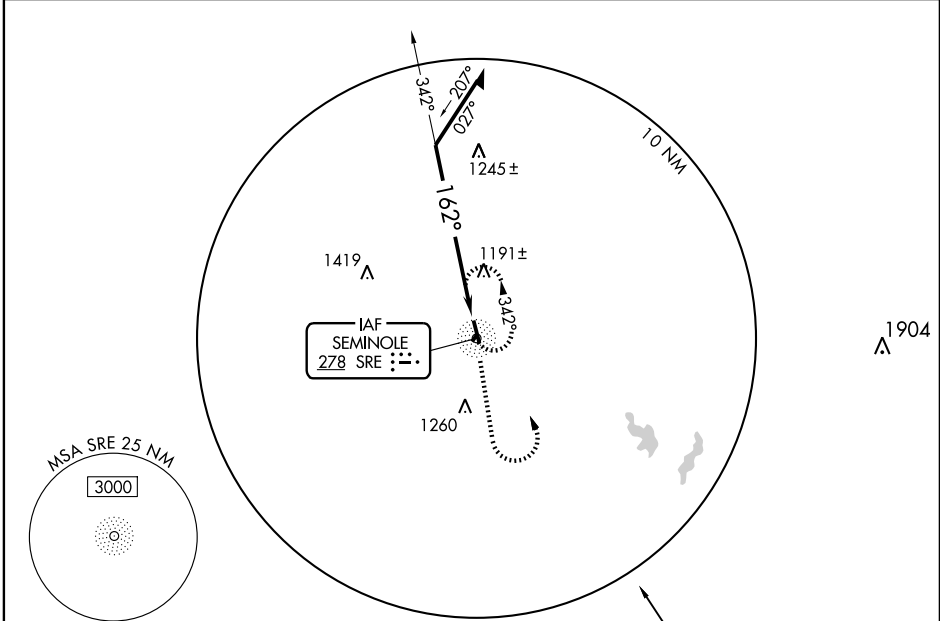
SEMINOLE MUNI (SRE)

SRE NDB <b>278</b>	APP CRS <b>162°</b>	Rwy Idg TDZE Apt Elev	<b>5000</b> <b>1024</b> <b>1024</b>
-----------------------	------------------------	-----------------------------	---

**▼** If local altimeter setting not received, use Shawnee Rgnl altimeter setting and increase all MDAs 40 feet.

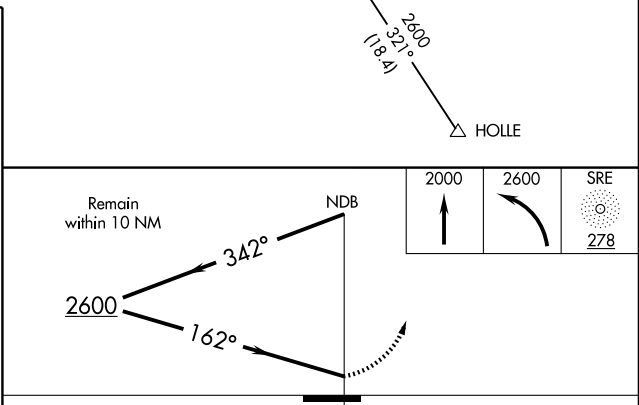
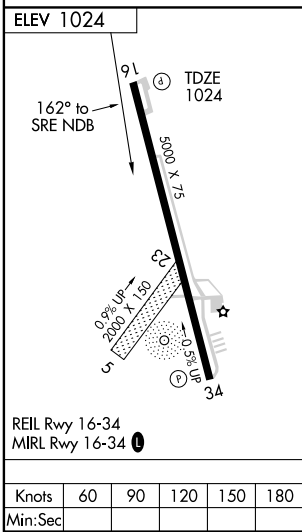
**▲ NA** MISSED APPROACH: Climb to 2000 then climbing left turn to 2600 direct SRE NDB and hold.

AWOS-3 <b>118.625</b>	FORT WORTH CENTER <b>132.2 338.35</b>	UNICOM <b>122.8</b> (CTAF) <b>①</b>
--------------------------	--	--



SC-1, 22 OCT 2009 to 19 NOV 2009

SC-1, 22 OCT 2009 to 19 NOV 2009



CATEGORY	A	B	C	D
S-16	1660-1	636 (700-1)	1660-1 <sup>3</sup> / <sub>4</sub> 636 (700-1 <sup>3</sup> / <sub>4</sub> )	NA
CIRCLING	1660-1	636 (700-1)	1660-1 <sup>3</sup> / <sub>4</sub> 636 (700-1 <sup>3</sup> / <sub>4</sub> )	NA

SEMINOLE, OKLAHOMA  
Amdt 4 08213

35°16' N-96°41' W

# SEMINOLE MUNI (SRE) NDB RWY 16