

BELFAST, MAINE

AL-6448 (FAA)

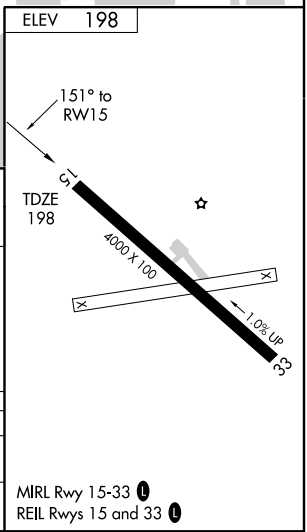
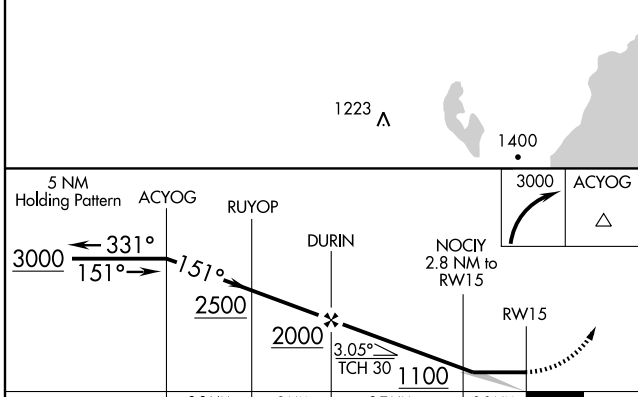
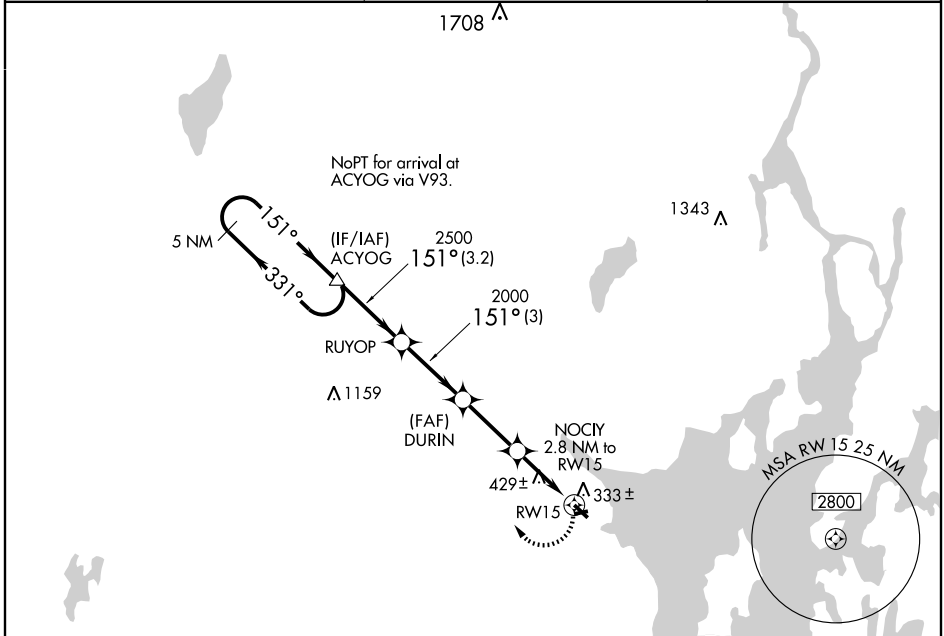
# RNAV (GPS) RWY 15

BELFAST MUNI (BST)

APP CRS	Rwy Idg	<b>4000</b>
<b>151°</b>	TDZE	<b>198</b>
	Apt Elev	<b>198</b>

<p><b>▼</b> DME/DME RNP-0.3 NA. Use Bangor altimeter setting; if not received, use Rockland altimeter setting and increase all MDAs 20 feet.</p>	<p><b>MISSED APPROACH:</b> Climbing right turn to 3000 direct ACYOG and hold.</p>
--	---

<p>BANGOR ASOS <b>127.75</b></p>	<p>BANGOR APP CON <b>118.925 239.3</b></p>	<p>UNICOM <b>122.8 (CTAF)</b></p>
--------------------------------------	--	---------------------------------------



CATEGORY	A	B	C	D
LNVA MDA	740-1	542 (600-1)	740-1½ 542 (600-1½)	NA
CIRCLING	760-1 562 (600-1)	800-1 602 (700-1)	880-2 682 (700-2)	NA

BELFAST, MAINE  
Orig 08101

44°25'N - 69°01'W

# RNAV (GPS) RWY 15

BELFAST MUNI (BST)

NE-1, 22 OCT 2009 to 19 NOV 2009

NE-1, 22 OCT 2009 to 19 NOV 2009