

TIPTON, OKLAHOMA

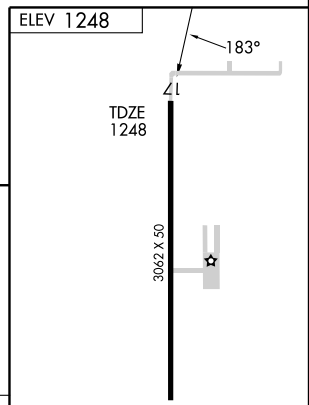
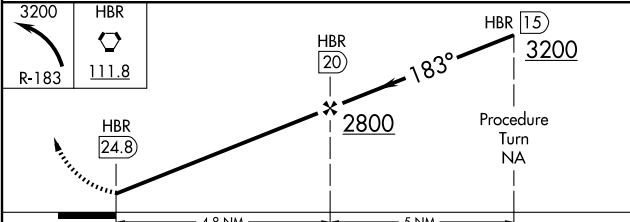
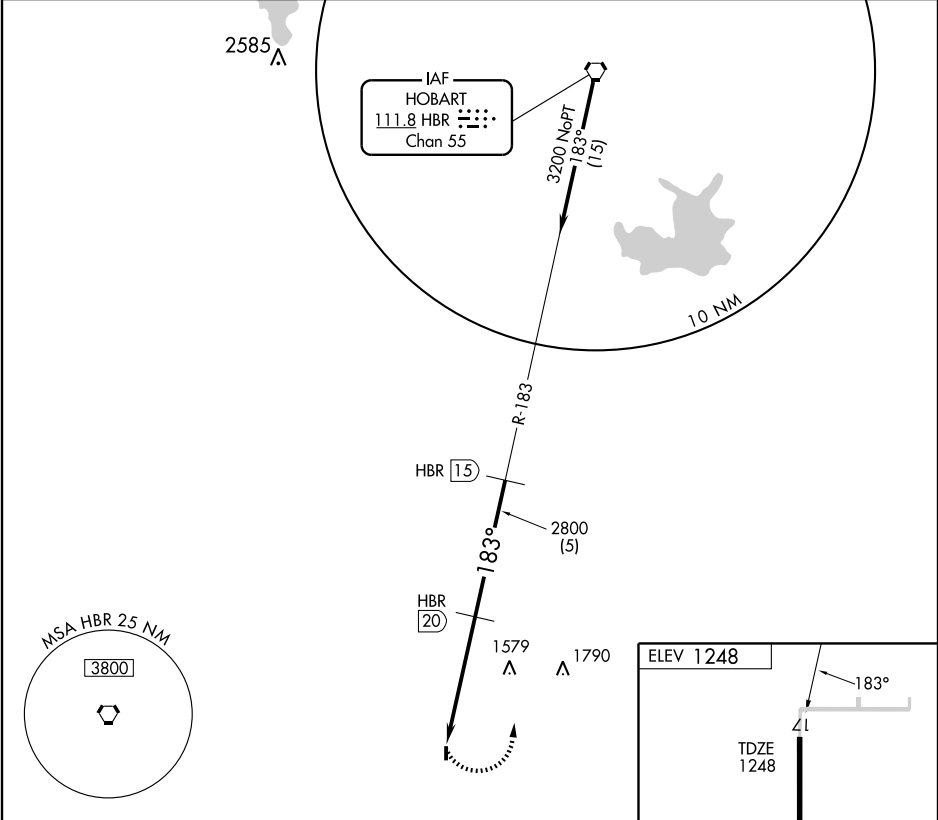
AL-6445 (FAA)

VORTAC HBR 111.8 Chan 55	APP CRS 183°	Rwy Idg TDZE Apt Elev	3062 1248 1248
---------------------------------------	------------------------	-----------------------------	---

VOR/DME RWY 17
TIPTON MUNI (108)

NA Use Altus AFB, OK altimeter setting. MISSED APPROACH: Climbing left turn to 3200 to HBR VORTAC via R-183.

ALTUS APP CON ★ **125.1 257.725** CTAF **122.9**



CATEGORY	A	B	C	D
S-17	2000-1 752 (800-1)	2000-1¼ 752 (800-1¼)	NA	
CIRCLING	2000-1 752 (800-1)	2000-1¼ 752 (800-1¼)	NA	

MIRL Rwy 17-35

Knots	60	90	120	150	180
Min:Sec					

TIPTON, OKLAHOMA
Orig-B 06327

34°28'N-99°10'W

TIPTON MUNI (108)
VOR/DME RWY 17

SC-1, 22 OCT 2009 to 19 NOV 2009

SC-1, 22 OCT 2009 to 19 NOV 2009