

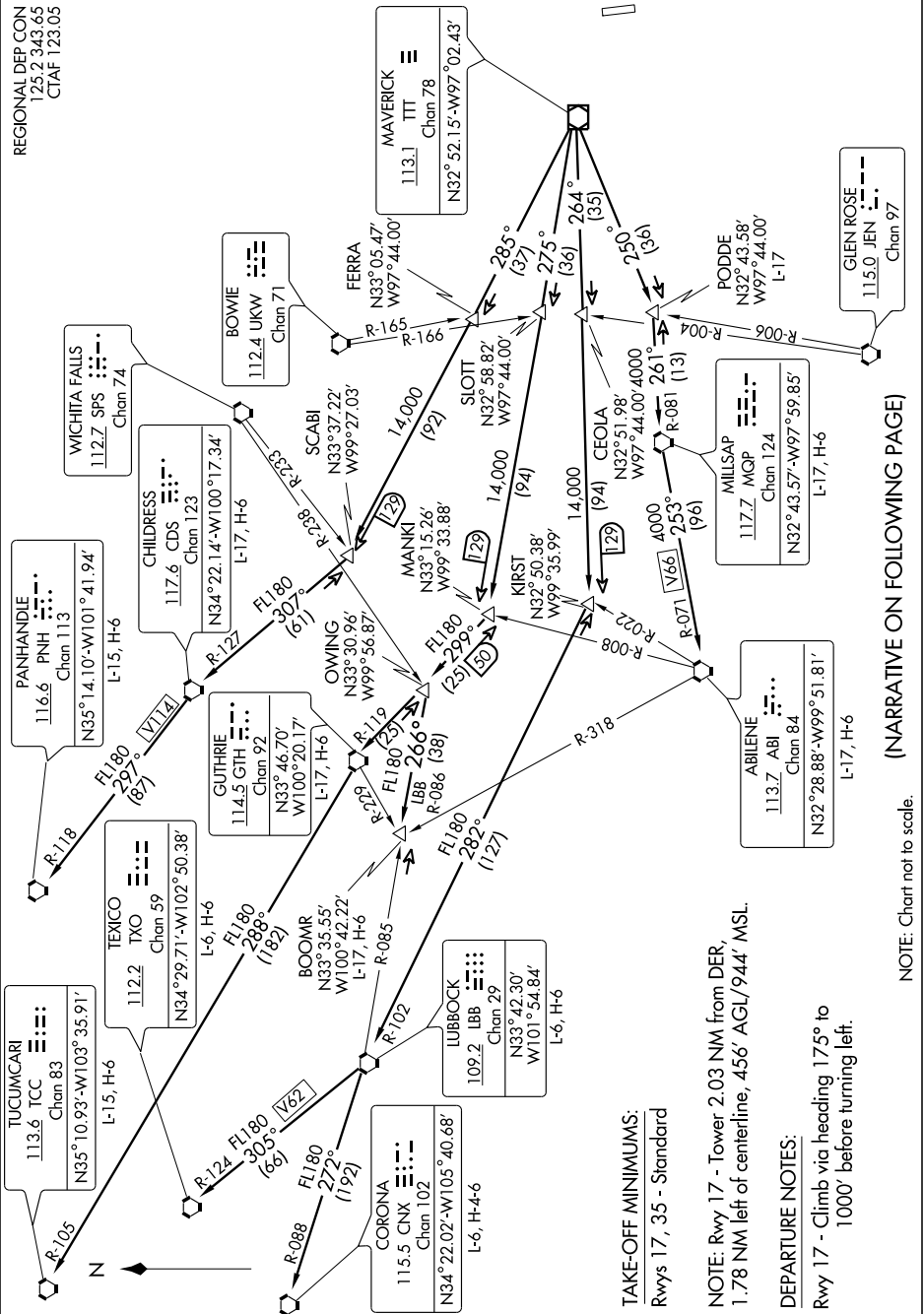
# WORTH FIVE DEPARTURE

SL-6444 (FAA)

MESQUITE METRO (H.Q.Z)

MESQUITE, TEXAS

SC-2, 22 OCT 2009 to 19 NOV 2009



(NARRATIVE ON FOLLOWING PAGE)

NOTE: Chart not to scale.

SC-2, 22 OCT 2009 to 19 NOV 2009

TAKE-OFF MINIMUMS:  
Rwy 17, 35 - Standard

NOTE: Rwy 17 - Tower 2.03 NM from DER,  
1.78 NM left of centerline, 456' AGL/944' MSL.

DEPARTURE NOTES:  
Rwy 17 - Climb via heading 175° to  
1000' before turning left.