

LOC I-HQZ <b>109.75</b> Chan <b>34 (Y)</b>	APP CRS <b>355°</b>	Rwy Idg TDZE <b>443</b> Apt Elev <b>447</b>	<b>5999</b>
--	------------------------	---	-------------

# LOC BC RWY 35

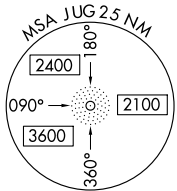
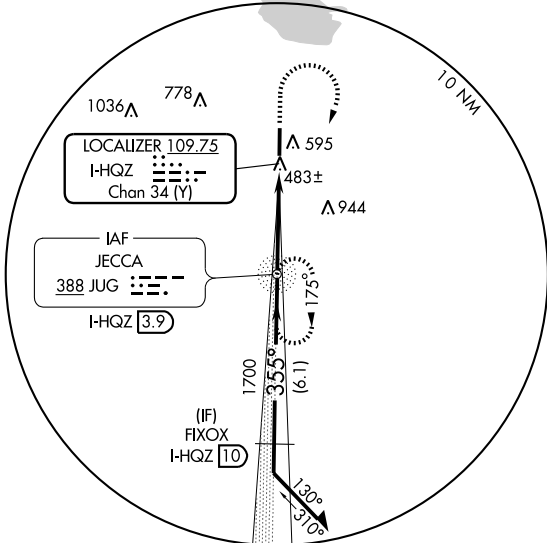
MESQUITE METRO (HQZ)

**ADF** required. When local altimeter setting not received, use Dallas-Love Field altimeter setting and increase all MDA 60 feet. Increase S-35 Cat C visibility 1/4 mile.

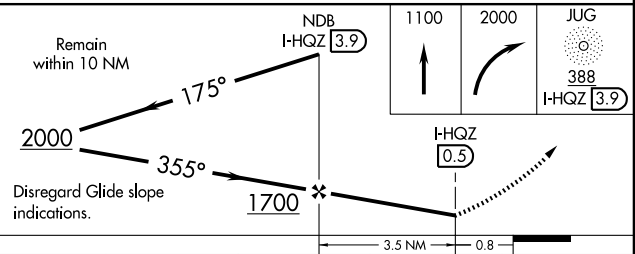
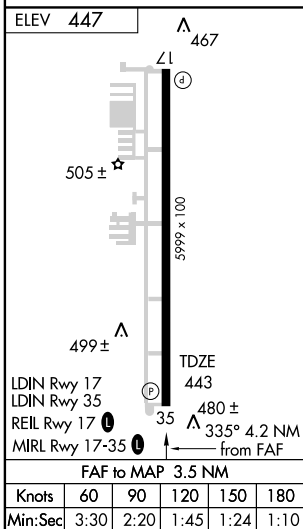
**MISSED APPROACH:** Climb to 1100 then climbing right turn to 2000 direct JUG NDB/I-HQZ 3.9 DME and hold.

AWOS-3 <b>118.175</b>	REGIONAL APP CON <b>125.2 343.65</b>	UNICOM <b>123.05 (CTAF) 0</b>
--------------------------	---	----------------------------------

△ 1368



## BACK COURSE



CATEGORY	A	B	C	D
S-35		800-1 357 (400-1)		NA
CIRCLING	960-1	513 (600-1)	960-1½ 513 (600-1½)	NA