

MESQUITE, TEXAS

AL-6444 (FAA)

LOC I-HQZ <b>109.75</b> Chan <b>34 (Y)</b>	APP CRS <b>175°</b>	Rwy Idg TDZE <b>447</b> Apt Elev <b>447</b>	<b>5999</b>
--	------------------------	---	-------------

# ILS or LOC RWY 17

MESQUITE METRO (HQZ)

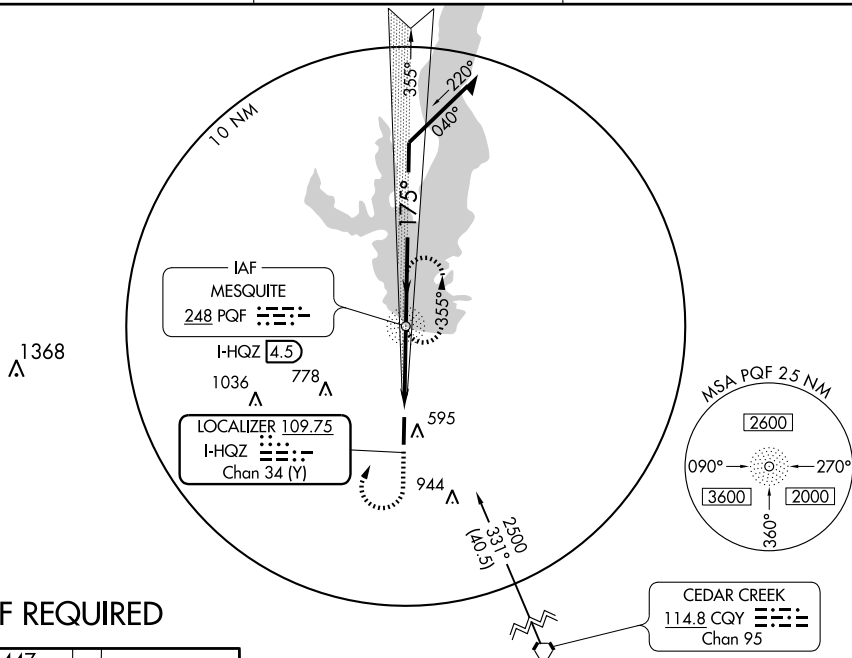
**▽** Obtain local altimeter setting on CTAF; when not received, use Dallas-Love Field altimeter setting.

**MISSED APPROACH:** Climb straight ahead to 2000, then turn right direct PQF NDB and hold.

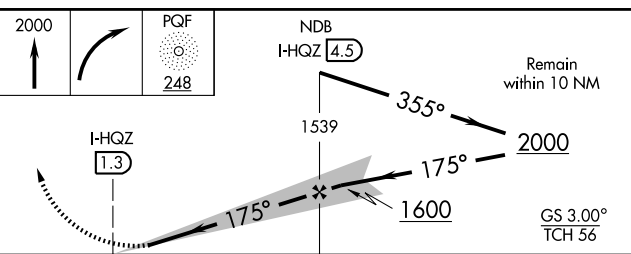
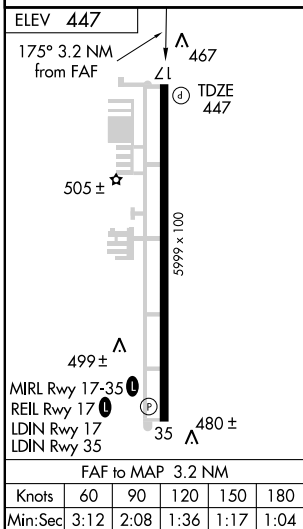
AWOS-3  
**118.175**

REGIONAL APP CON  
**125.2 343.65**

UNICOM  
**123.05 (CTAF) ①**



## ADF REQUIRED



CATEGORY	A	B	C	D
S-ILS 17	697- <sup>3</sup> / <sub>4</sub>	250 (300- <sup>3</sup> / <sub>4</sub> )		NA
S-LOC 17	740-1	293 (300-1)		NA
CIRCLING	960-1	513 (600-1)	960-1½ 513 (600-1½)	NA
DALLAS-LOVE FIELD ALTIMETER SETTING MINIMUMS				
S-ILS 17	743-1	296 (300-1)		NA
S-LOC 17	800-1	353 (400-1)		NA
CIRCLING	1000-1	553 (600-1)	1000-1½ 553 (600-1½)	NA

MESQUITE, TEXAS  
Amdt 1B 06271

32°45'N-96°32'W

# MESQUITE METRO (HQZ)

## ILS or LOC RWY 17

SC-2, 22 OCT 2009 to 19 NOV 2009

SC-2, 22 OCT 2009 to 19 NOV 2009