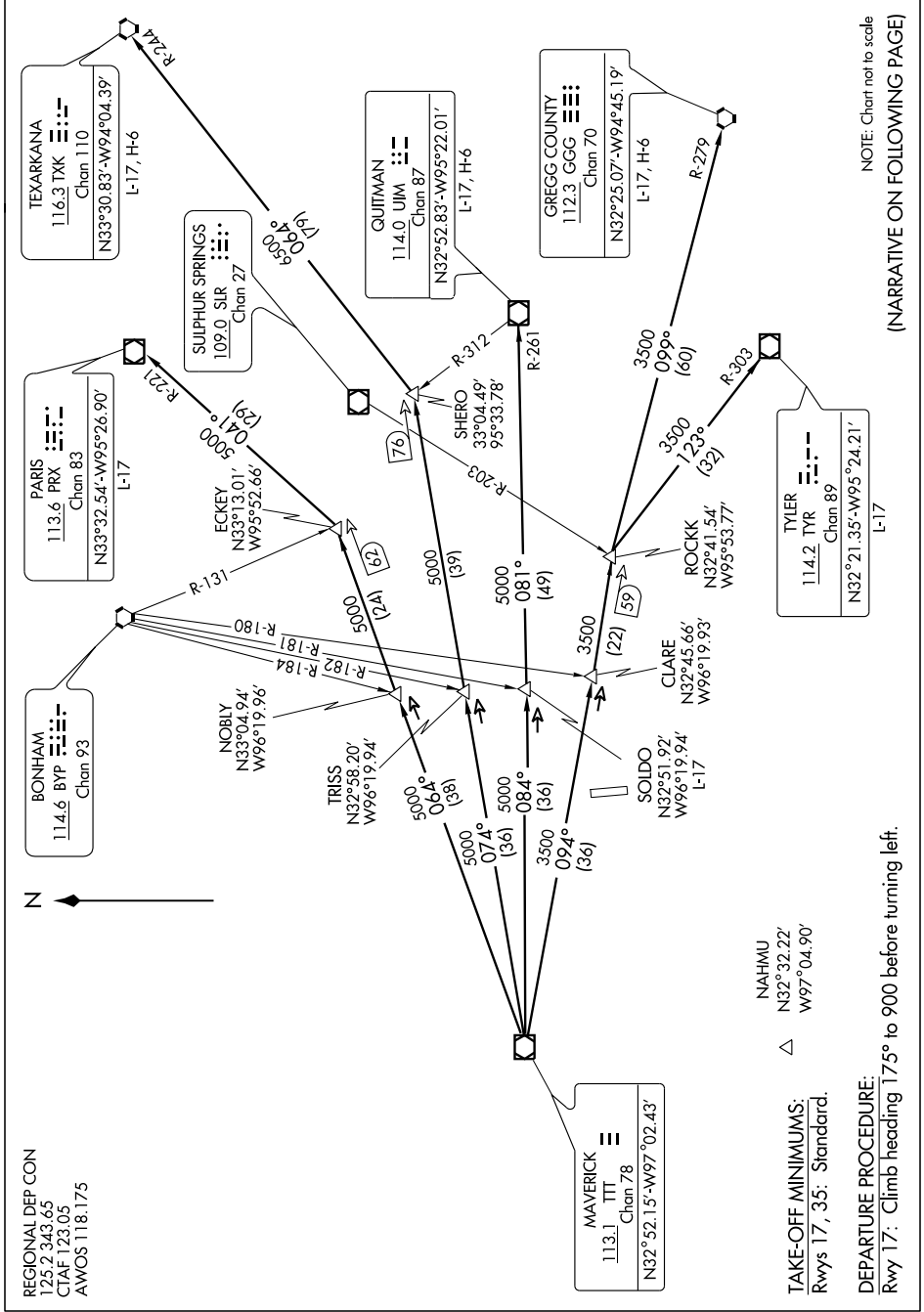


HUBBARD SIX DEPARTURE

SL-6444 (FAA)

MESQUITE METRO (HQZ)
MESQUITE, TEXAS

SC-2, 22 OCT 2009 to 19 NOV 2009



REGIONAL DEP CON
125.2 343.65
CTAF 123.05
AWOS 118.175



MAVERICK
113.1 TTT
Chan 78
N32°52.15'-W97°02.43'

NAHMU
N32°32.22'
W97°04.90'

TAKE-OFF MINIMUMS:
Rwys 17, 35: Standard.

DEPARTURE PROCEDURE:
Rwy 17: Climb heading 175° to 900 before turning left.

NOTE: Chart not to scale
(NARRATIVE ON FOLLOWING PAGE)

SC-2, 22 OCT 2009 to 19 NOV 2009