

CUBA, MISSOURI

AL-6442 (FAA)

# NDB-A

CUBA MUNI (UBX)

NDB UBX <b>380</b>	APP CRS <b>030°</b>	Rwy Idg TDZE Apt Elev	<b>N/A</b> <b>N/A</b> <b>1023</b>
-----------------------	------------------------	-----------------------------	---

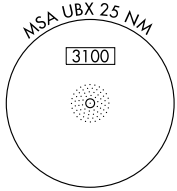
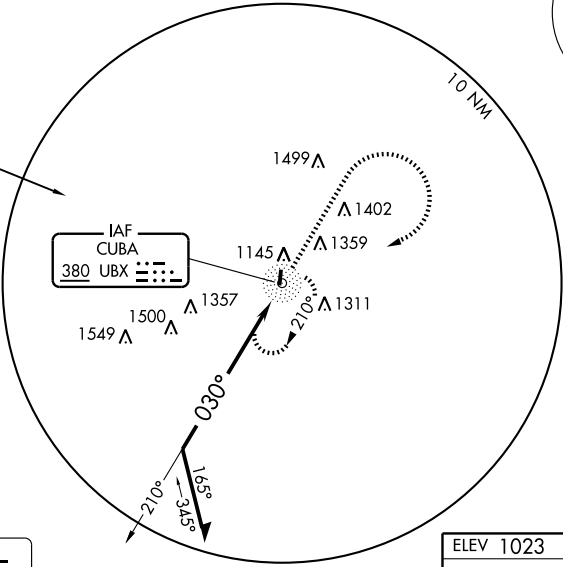
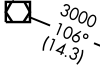
▼ Use Rolla National altimeter setting. ▲ NA	MISSED APPROACH: Climb to 2100 then climbing right turn to 3000 direct UBX NDB and hold.
---	--

KANSAS CITY CENTER <b>128.35 284.67</b>	UNICOM <b>122.8 (CTAF)</b>
--	-------------------------------

NC-3, 22 OCT 2009 to 19 NOV 2009

NC-3, 22 OCT 2009 to 19 NOV 2009

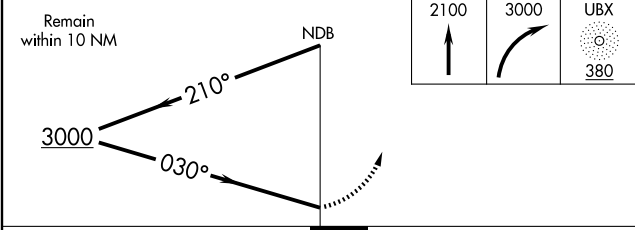
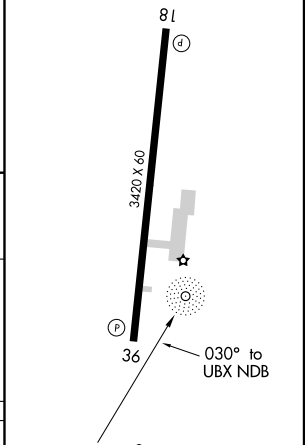
VICHY  
117.7 VEH  
Chan 124



MAPLES  
113.4 MAP  
Chan 81



ELEV 1023



CATEGORY	A	B	C	D
CIRCLING	1640-1	617 (700-1)	NA	

MIRL Rwy 18-36  
REIL Rwys 18 and 36

CUBA, MISSOURI  
Orig 09071

38°04'N - 91°26'W

# NDB-A

CUBA MUNI (UBX)