

WEST UNION, IOWA

AL-6441 (FAA)

VORTAC UKN 116.6 Chan 113	APP CRS 207°	Rwy Idg TDZE Apt Elev 1232	NA NA 1232
---	------------------------	---	--------------------------------

VOR/DME or GPS-A

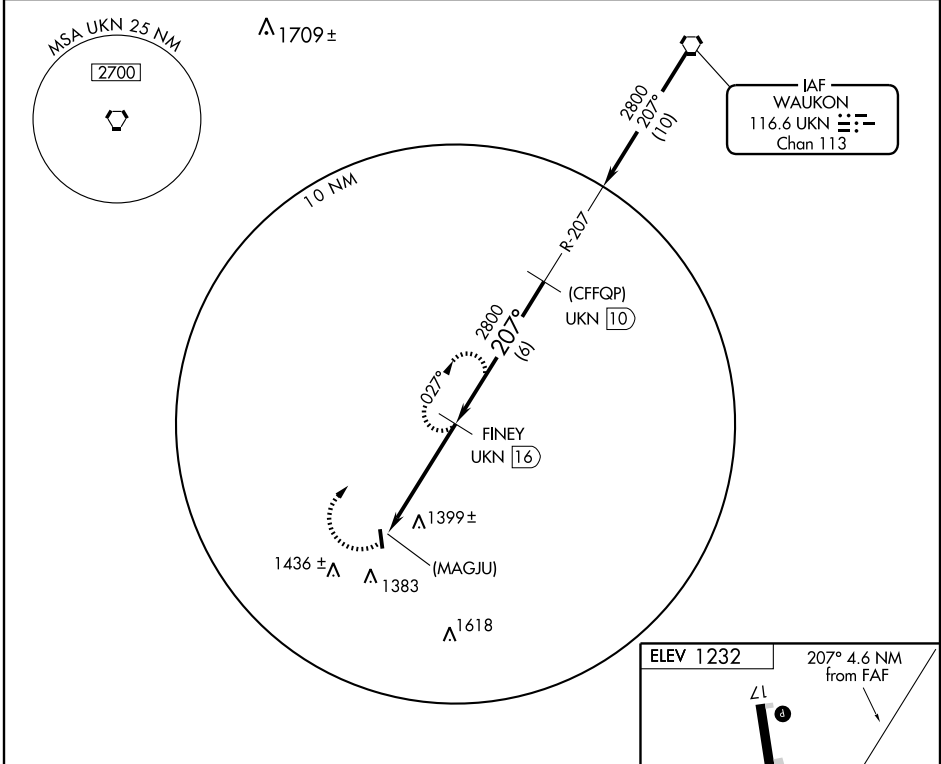
WEST UNION/ GEORGE L. SCOTT MUNI (3Y2)

Obtain local altimeter setting on CTAF; when not received, use Waterloo altimeter setting.
 NA

MISSED APPROACH: Climb to 2800, then right turn via UKN R-207 to FINEY 16 DME and hold.

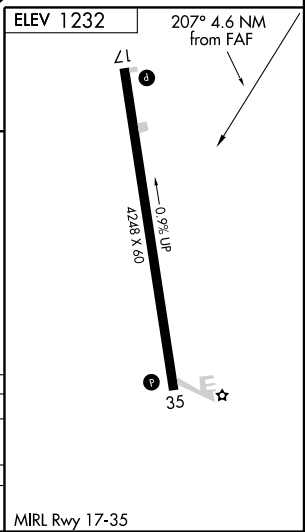
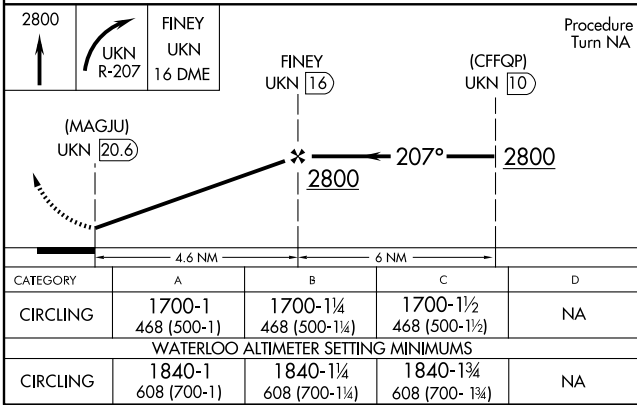
MINNEAPOLIS CENTER **118.85**

UNICOM **122.8** (CTAF)



NC-3, 22 OCT 2009 to 19 NOV 2009

NC-3, 22 OCT 2009 to 19 NOV 2009



CATEGORY	A	B	C	D
CIRCLING	1700-1 468 (500-1)	1700-1¼ 468 (500-1¼)	1700-1½ 468 (500-1½)	NA
WATERLOO ALTIMETER SETTING MINIMUMS				
CIRCLING	1840-1 608 (700-1)	1840-1¼ 608 (700-1¼)	1840-1¾ 608 (700-1¾)	NA

MIRL Rwy 17-35

WEST UNION, IOWA
Amdt 3 09071

WEST UNION/ GEORGE L. SCOTT MUNI (3Y2)
42°59'N-91°47'W

VOR/DME or GPS-A