

PALM COAST, FLORIDA

AL-6440 (FAA)

VOR-A

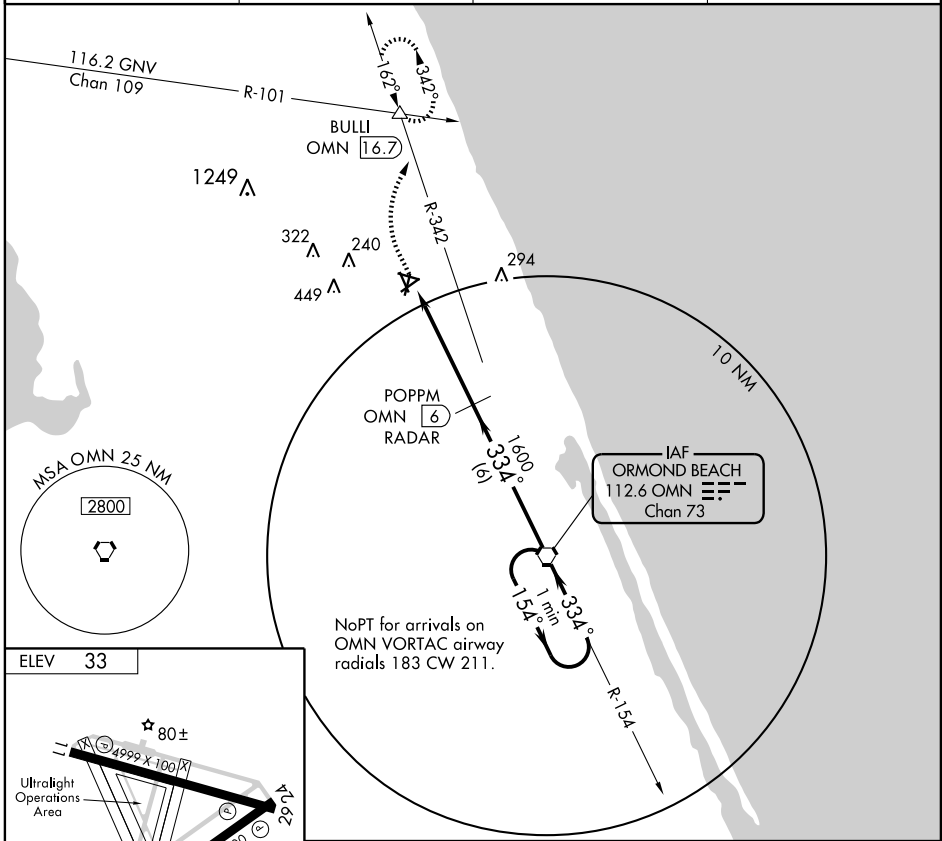
VORTAC OMN 112.6 Chan 73	APP CRS 334°	Rwy Idg TDZE Apt Elev 33	N/A N/A 33
--	------------------------	--	---------------------------------------

PALM COAST / FLAGLER COUNTY (XFL)

NA If local altimeter setting not received, use Daytona Beach altimeter setting and increase all MDAs 60 feet. RADAR or DME REQUIRED.

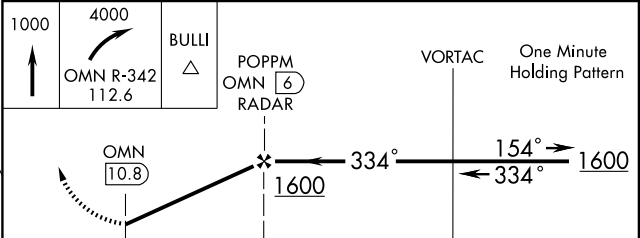
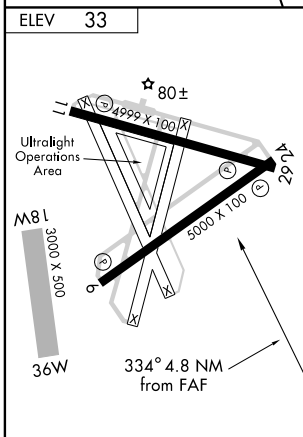
MISSED APPROACH: Climb to 1000 then climbing right turn to 4000 via OMN R-342 to BULLI Int and hold.

AWOS-3 128.325	DAYTONA APP CON 125.8 385.5	CTAF 118.95	UNICOM 123.0
--------------------------	---------------------------------------	-----------------------	------------------------



SE-3, 22 OCT 2009 to 19 NOV 2009

SE-3, 22 OCT 2009 to 19 NOV 2009



MIRL Rwy 6-24 and 11-29

FAF to MAP	4.8 NM				
Knots	60	90	120	150	180
Min:Sec	4:48	3:12	2:24	1:55	1:36

CATEGORY	A	B	C	D
CIRCLING	560-1	527 (600-1)	560-1½ 527 (600-1½)	800-2½ 767 (800-2½)

PALM COAST, FLORIDA
Amdt 1A 08269

29°28'N - 81°12'W

PALM COAST / FLAGLER COUNTY (XFL)

VOR-A