

WAAS CH <b>66009</b> <b>W11A</b>	APP CRS <b>112°</b>	Rwy Idg TDZE Apt Elev	<b>4999</b> <b>33</b> <b>33</b>
--	------------------------	-----------------------------	---------------------------------------

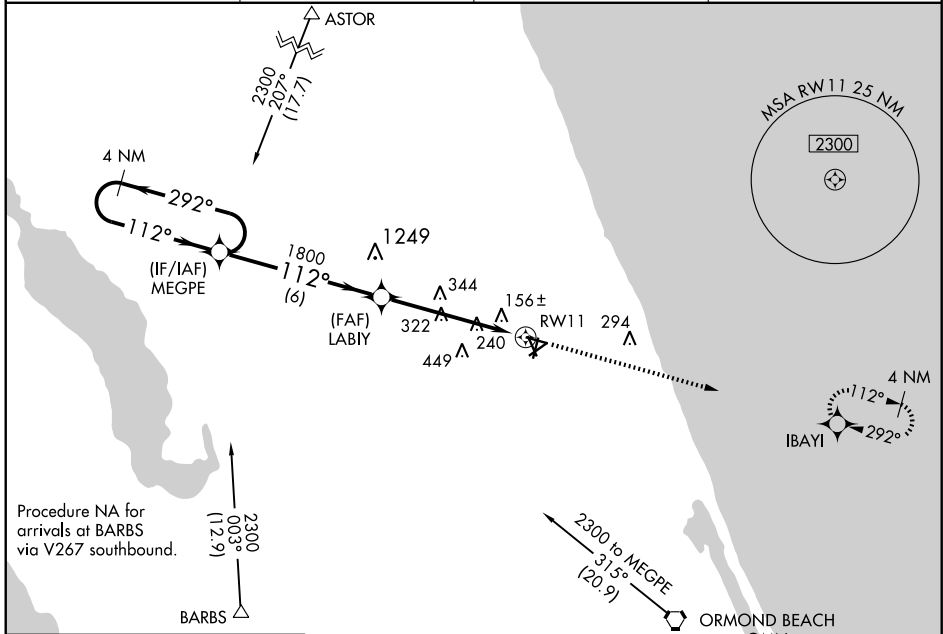
# RNAV (GPS) RWY 11

PALM COAST / FLAGLER COUNTY (XFL)

**⚠ NA** For uncompensated Baro-VNAV systems, LNAV/VNAV NA below -15°C (5°F) or above 49°C (120°F). DME/DME RNP-0.3 NA. Visibility reduction by helicopters NA. When local altimeter setting not received, use Daytona Beach altimeter setting and increase all DA 44 feet and all MDA 60 feet, and increase LNAV/VNAV all Cats. and Circling Cat. D visibility ¼ mile. Baro-VNAV NA when using Daytona Beach altimeter setting.

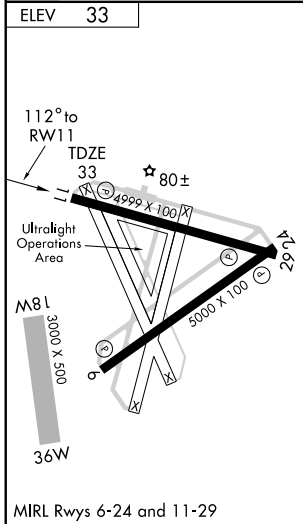
**MISSED APPROACH:** Climb to 2300 direct IBAYI and hold.

AWOS-3 <b>128.325</b>	DAYTONA APP CON <b>125.8 385.5</b>	CTAF <b>118.95</b>	UNICOM <b>123.0</b>
--------------------------	---------------------------------------	-----------------------	------------------------

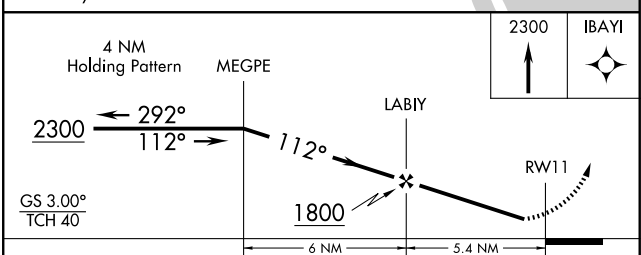


SE-3, 22 OCT 2009 to 19 NOV 2009

SE-3, 22 OCT 2009 to 19 NOV 2009



Procedure NA for arrivals at OMN VORTAC on airway radials 342 CW 360.



CATEGORY	A	B	C	D
LPV DA		353-1¼	320 (400-1¼)	
LNAV/VNAV DA		460-1½	427 (500-1½)	
LNAV MDA	640-1	607 (700-1)	640-1¾ 607 (700-1¾)	640-2 607 (700-2)
CIRCLING	640-1	607 (700-1)	640-1¾ 607 (700-1¾)	800-2½ 767 (800-2½)