

RAEFORD, NORTH CAROLINA

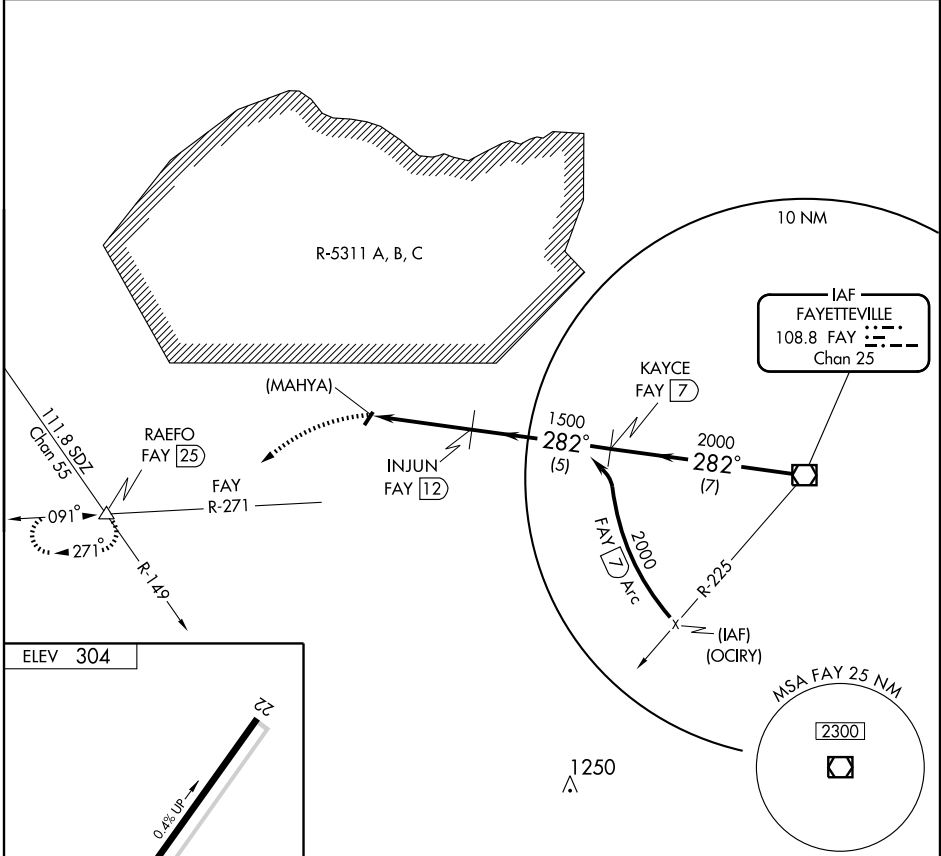
AL-6439 (FAA)

VOR/DME FAY <b>108.8</b> Chan <b>25</b>	APP CRS <b>282°</b>	Rwy Idg TDZE Apt Elev <b>N/A</b> <b>N/A</b> <b>304</b>
---	------------------------	---

# VOR/DME or GPS-A

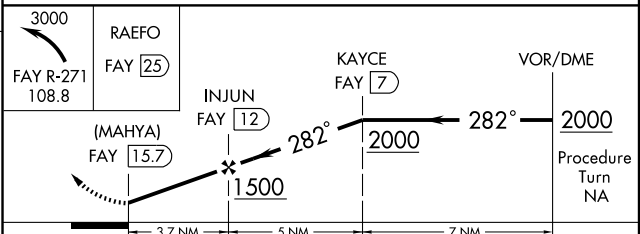
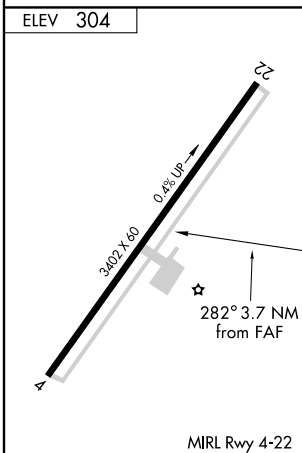
RAEFORD/P K AIRPARK (5W4)

<p>▼ ▲ NA</p> <p>Use Fayetteville altimeter setting.</p>	<p>MISSED APPROACH: Climbing left turn to 3000 via FAY R-271 to RAEFO 25 DME and hold.</p>
<p>FAYETTEVILLE APP CON <b>127.8 295.0</b></p>	<p>UNICOM <b>123.0</b> (CTAF)</p>



SE-2, 22 OCT 2009 to 19 NOV 2009

SE-2, 22 OCT 2009 to 19 NOV 2009



Knots	60	90	120	150	180	
	Min:Sec					
CATEGORY	A		B		C	D
CIRCLING	820-1		516 (600-1)		820-1½ 516 (600-1½)	NA

RAEFORD, NORTH CAROLINA  
Amdt 3A 08045

35°01'N - 79°11'W

# VOR/DME or GPS-A

RAEFORD/P K AIRPARK (5W4)