

MEXIA, TEXAS

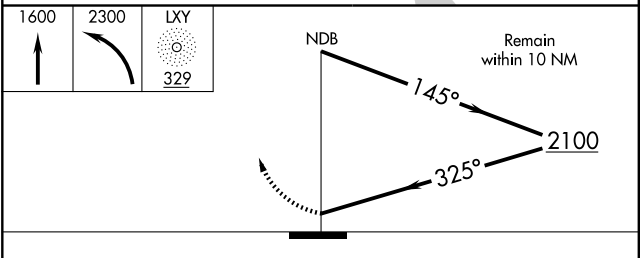
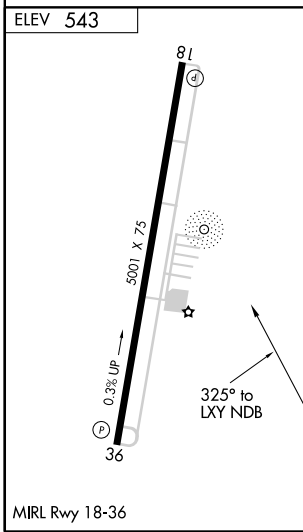
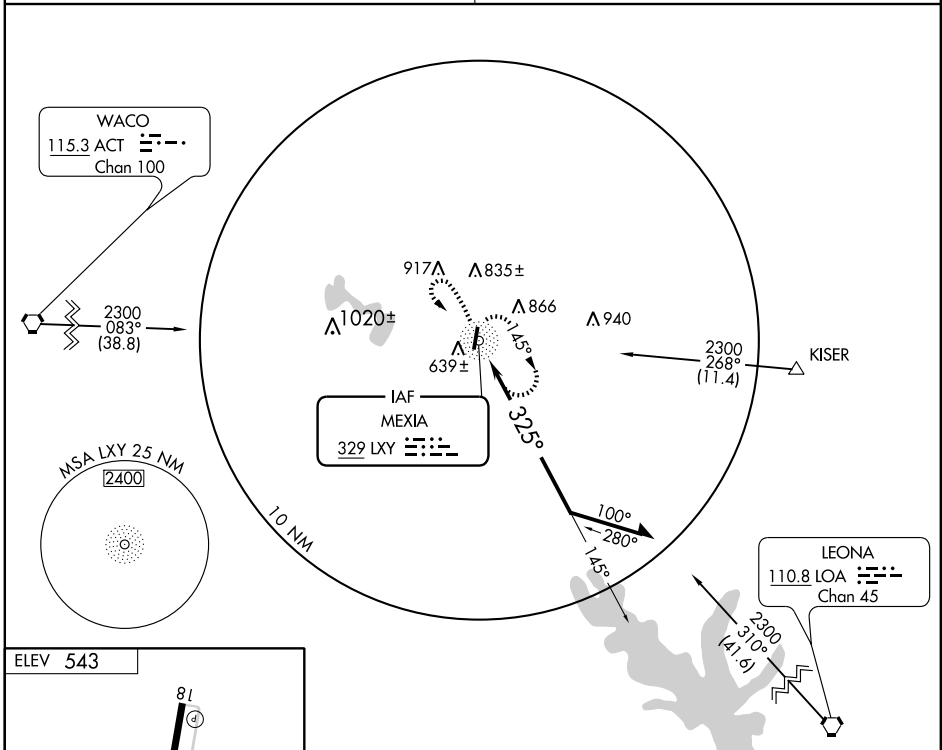
AL-6438 (FAA)

NDB-A

MEXIA-LIMESTONE COUNTY (LXY)

NDB LXY 329	APP CRS 325°	Rwy Idg TDZE Apt Elev	N/A N/A 543
-----------------------	------------------------	-----------------------------	--

△ NA Obtain local altimeter setting on CTAF; when not received, use Waco altimeter setting.	MISSED APPROACH: Climb to 1600 then climbing left turn to 2300 direct LXY NDB and hold.
WACO APP CON 135.2 352.0	UNICOM 122.8 (CTAF)



CATEGORY	A	B	C	D
CIRCLING	1000-1	457 (500-1)	1180-1 ¾ 637 (700-1¾)	NA
WACO ALTIMETER SETTING MINIMUMS				
CIRCLING	1080-1	537 (600-1)	1260-2 717 (800-2)	NA

MEXIA, TEXAS
Amdt 3 09239

31°38'N-96°31'W

MEXIA-LIMESTONE COUNTY (LXY)

NDB-A

SC-5, 22 OCT 2009 to 19 NOV 2009

SC-5, 22 OCT 2009 to 19 NOV 2009