

MEXIA, TEXAS

AL-6438 (FAA)

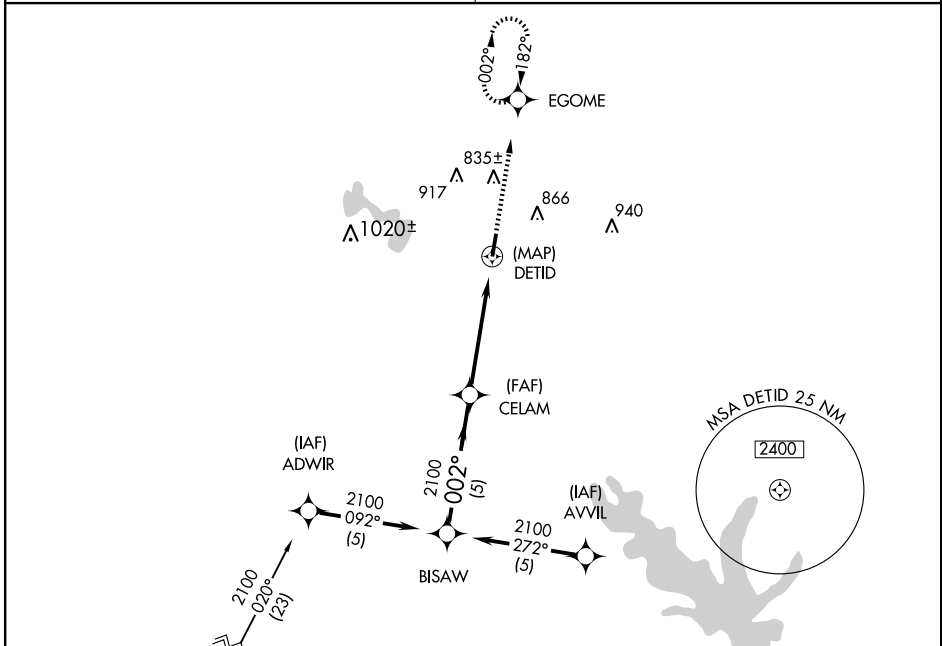
GPS RWY 36

MEXIA-LIMESTONE COUNTY (L.X.Y)

APP CRS 002°	Rwy Idg TDZE Apt Elev	5001 540 543
------------------------	-----------------------------	---

▲ NA Obtain local altimeter setting on CTAF; when not received, use Waco altimeter setting.	MISSED APPROACH: Climb to 2100 via 002° course to EGOME WP and hold.
--	--

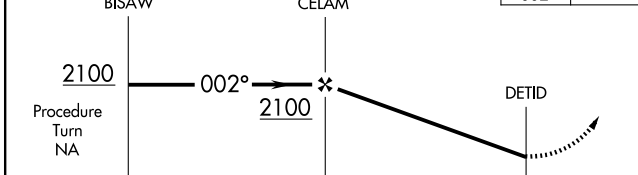
WACO APP CON 135.2 352.0	UNICOM 122.8 (CTAF)
------------------------------------	-------------------------------



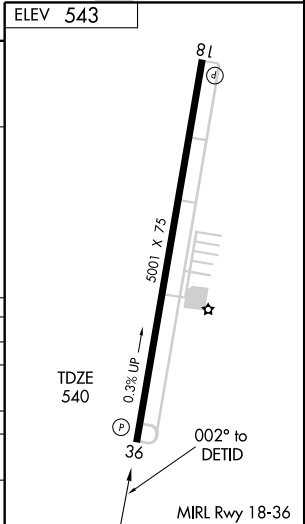
SC-5, 22 OCT 2009 to 19 NOV 2009

SC-5, 22 OCT 2009 to 19 NOV 2009

ELEV 543



CATEGORY	A	B	C	D
S-36	900-1 360 (400-1)			NA
CIRCLING	940-1 397 (400-1)	1000-1 457 (500-1)	1180-1 ¾ 637 (700-1 ¾)	NA
WACO ALTIMETER SETTING MINIMUMS				
S-36	980-1	440 (500-1)	980-1 ¼ 440 (500-1 ¼)	NA
CIRCLING	1040-1	497 (500-1)	1260-2 717 (800-2)	NA



MEXIA, TEXAS
Orig-A 09239

31°38'N-96°31'W

MEXIA-LIMESTONE COUNTY (L.X.Y)

GPS RWY 36